



Alaska Department of Transportation & Public Facilities

SURFACE TRANSPORTATION & MAP-21 OVERVIEW

Deputy Commissioner K. Kim Rice, P.E.
January 27, 2015



Outline

- DOT & PF
 - Purpose - Statutes
 - Agency's Mission
- DOT&PF's Organization
 - 1 - Headquarters – Programs, Policy
 - 2 - Systems – AMHS, Internationals
 - 3 - Regions – Capital Program Delivery; M&O
- Budget – Operating & Capital
- Moving Ahead for Progress in the 21st Century (MAP-21)
- Strengths / Challenges / Initiatives
- Web Information



Alaska Statute

- **Alaska Statutes: AS 19.05.125 Purpose.**

The purpose of AS 19.05 - AS 19.25 is to establish a highway department capable of carrying out a highway planning, construction, and maintenance program that will provide a common defense to the United States and Alaska, a network of highways linking together cities and communities throughout the state (thereby contributing to the development of commerce and industry in the state, and aiding the extraction and utilization of its resources), and otherwise improve the economic and general welfare of the people of the state.



Mission

“Keep Alaska moving through service and infrastructure.”

To do this we:

- Provide for the safe and efficient movement of people and goods
- Provide access to state services
- Open opportunities for exploration and development of Alaska’s resources



Core Values

“Keep Alaska moving through service and infrastructure.”

To do this we Encourage/Embrace the Core Values

- **Integrity:** Ensure honesty, dependability, loyalty, and a high ethical standard
- **Excellence:** Personal and department commitment to continually improve individual, team, and organizational knowledge, performance, and methods to provide superior service and products
- **Respect:** Positive regard for colleagues and customers



Strengths

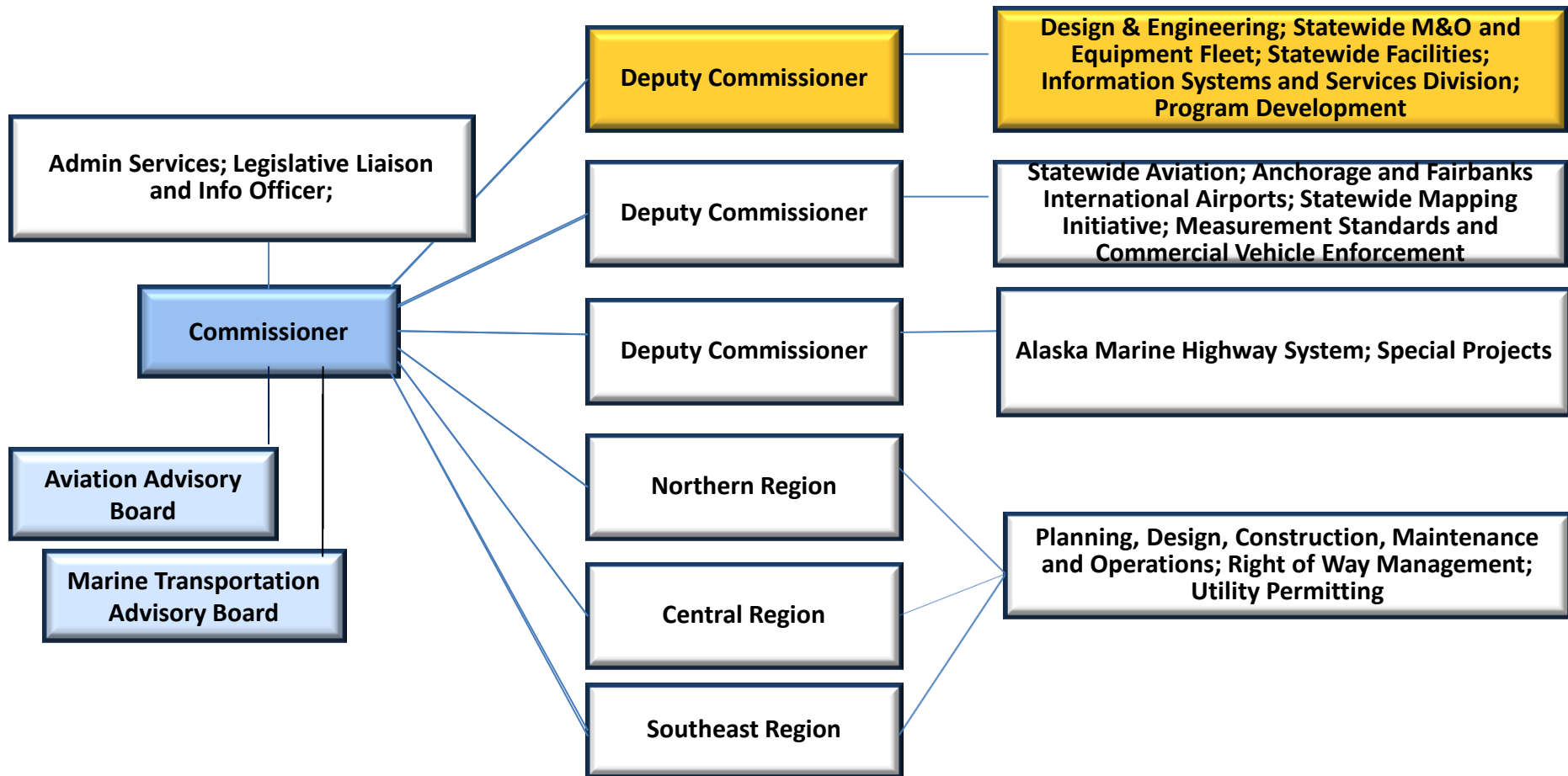
- **History of success**
 - Tough mission, in a tough environment
 - Permafrost, mountains, oceans, extreme climate, vast distances
- **Not just about highways / Most diverse state DOT among 50 states / Multi-model**
- **Workforce –Great People!**
 - Competence - experience, expertise, knowledge
 - Dedicated
 - Pride in accomplishments
 - Strong work ethic
 - Innovative
 - Problem solvers
- **Quantity and quality of assets**
- **Diverse & interesting challenges**
 - Opportunity for growth
 - Opportunity to serve



2014 Richardson Highway Avalanche

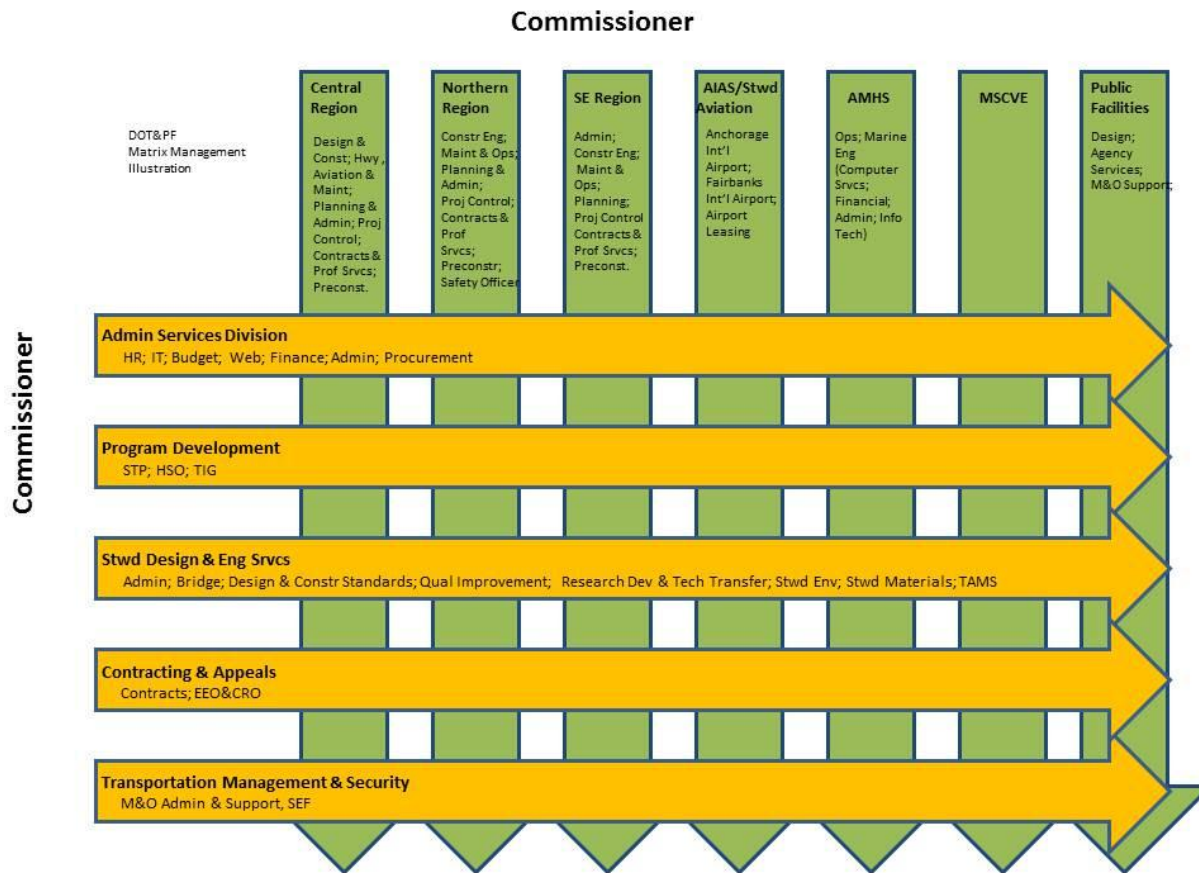


Organization





Fabric of DOT&PF



CREDIT:
Shelly Saviers &
Amanda Holland



Statewide Functions

- Statewide Engineering
 - Standards, Bridge Design, Harbors
 - Geotechnical/Materials, Right of Way, Environmental
- Statewide Maintenance & State Equipment Fleet
- Planning/Program Development
 - STIP, long range plan, data warehouse, highway safety office
- Facilities
- Information Systems and Services
- Statewide Aviation, AMHS, Administrative, MSCVE

<http://dot.state.ak.us/>



Regional Functions

- Three Geographic Regions
 - Highway design and construction
 - M&O to both highways and rural aviation systems
 - Planning, ROW, environmental
 - Aviation design and construction
 - Marine Facilities for AMHS

- Locations

Central Region – Anchorage
Northern Region – Fairbanks
Southcoast Region - Juneau



Southcoast Maintenance Shooting down avalanches on Thane Road.

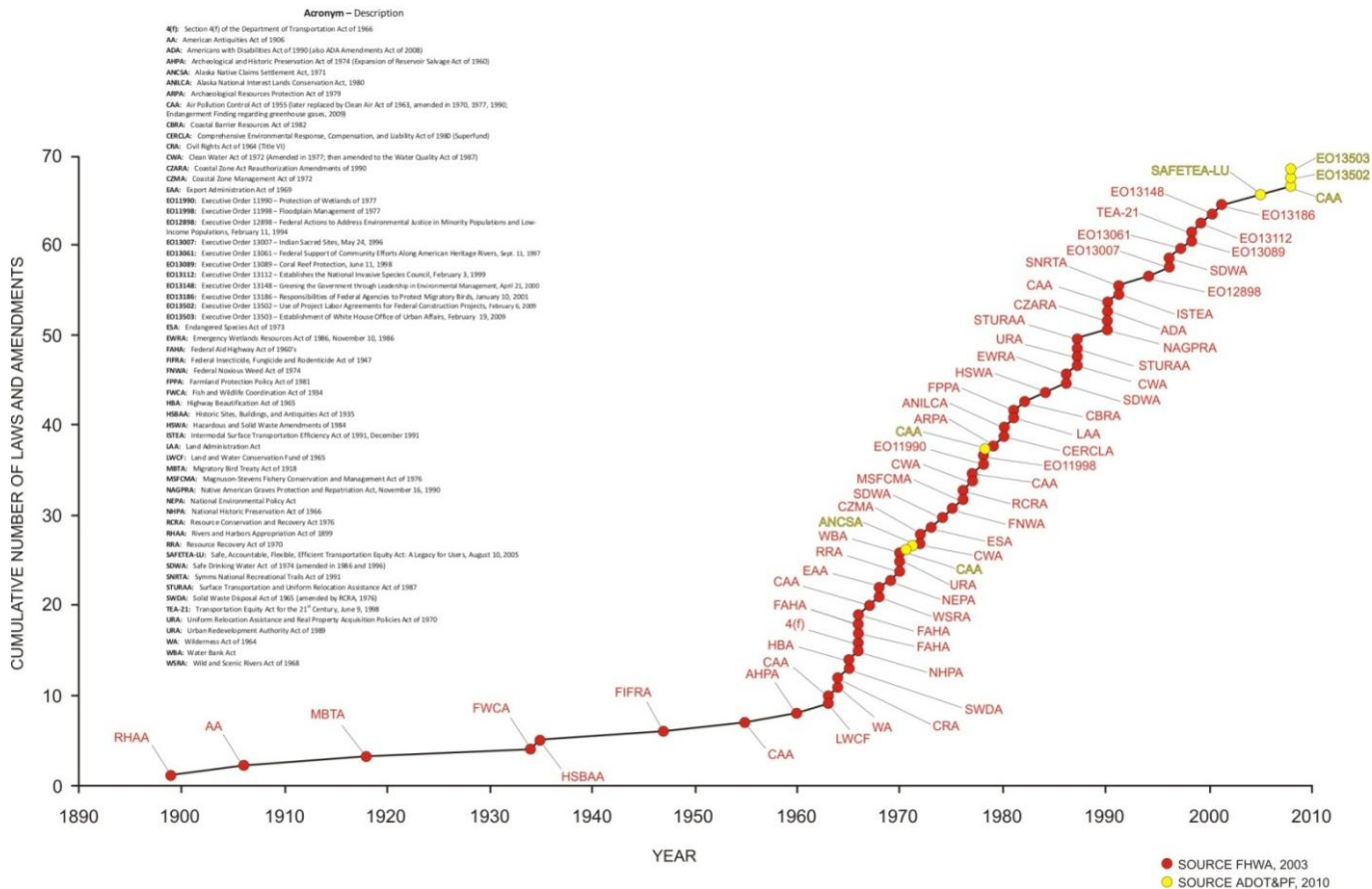


Challenges

- M&O \$ – Balancing budget against needs, changing conditions and expectations
- Capital \$ – very dependent upon federal funds, dollars not indexed to need or construction cost
 - Rural essential needs
 - Population growth demands, more lanes
 - Safety issues
- Staffing – Aging workforce / Recruitment & Retention
- Environmental/land issues – continue to expand, new issues being raised, longer process timelines



Federal Environmental Requirements Affecting Transportation

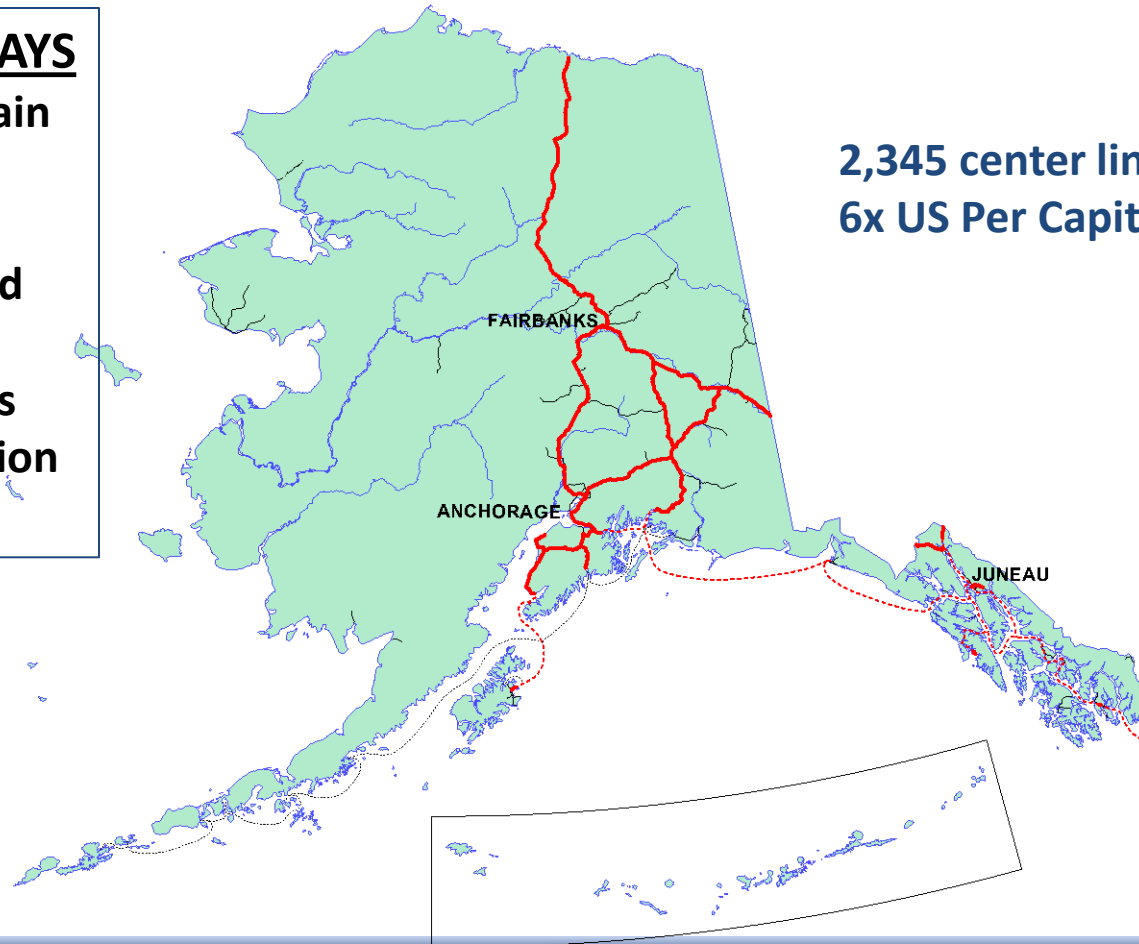




National Highway System

DOT&PF HIGHWAYS

- Own and maintain 5,589 miles of roads/highways
- 810 State Owned Bridges
- 7 Weigh Stations
- 9 Weigh-in-Motion Stations

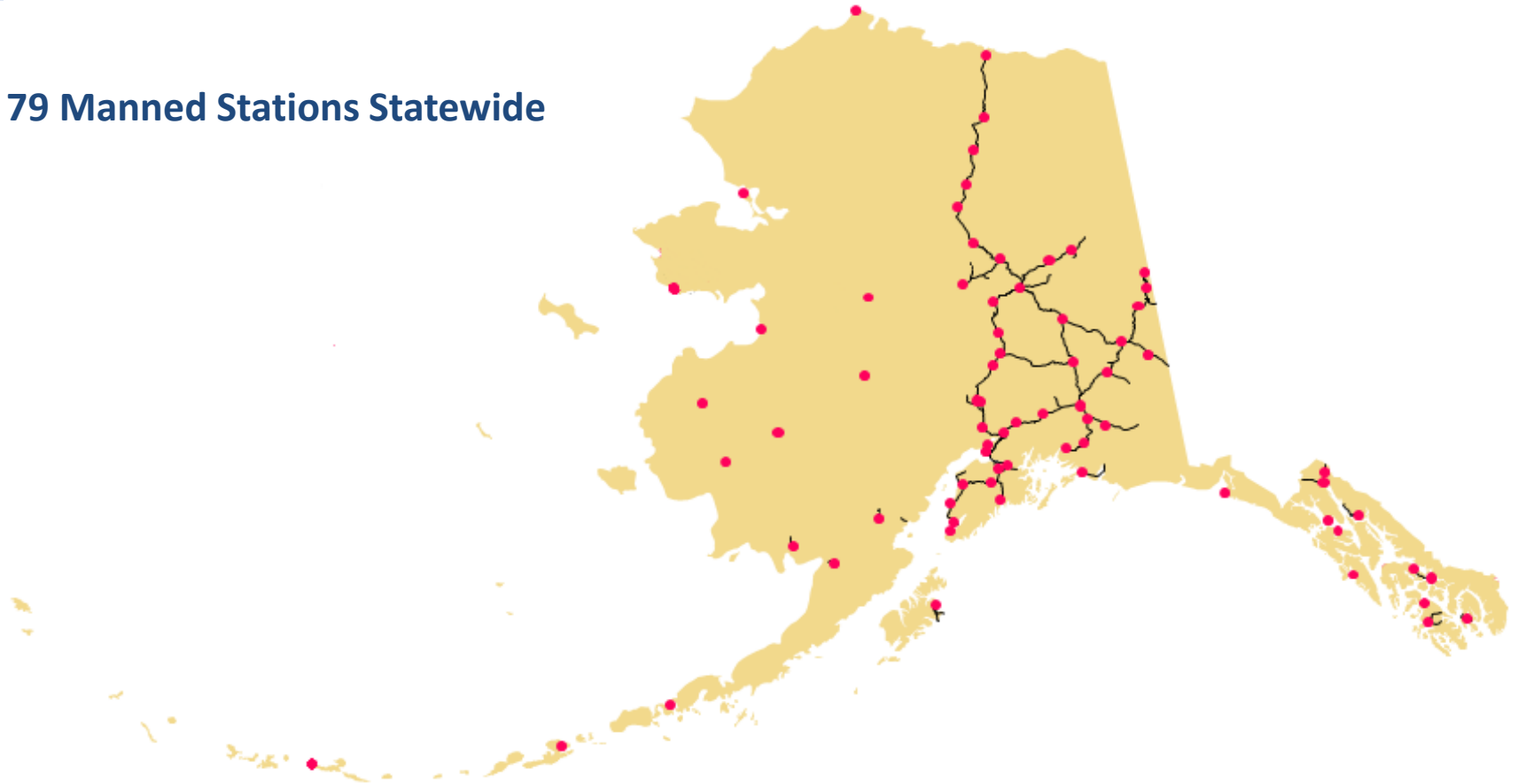


2,345 center line miles
6x US Per Capita avg.



DOT&PF Maintenance Stations

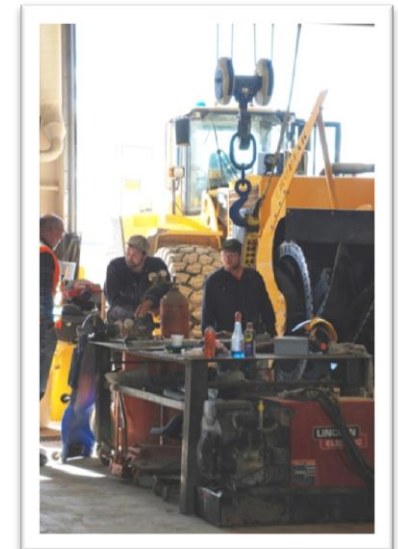
79 Manned Stations Statewide





Changes/Efficiencies

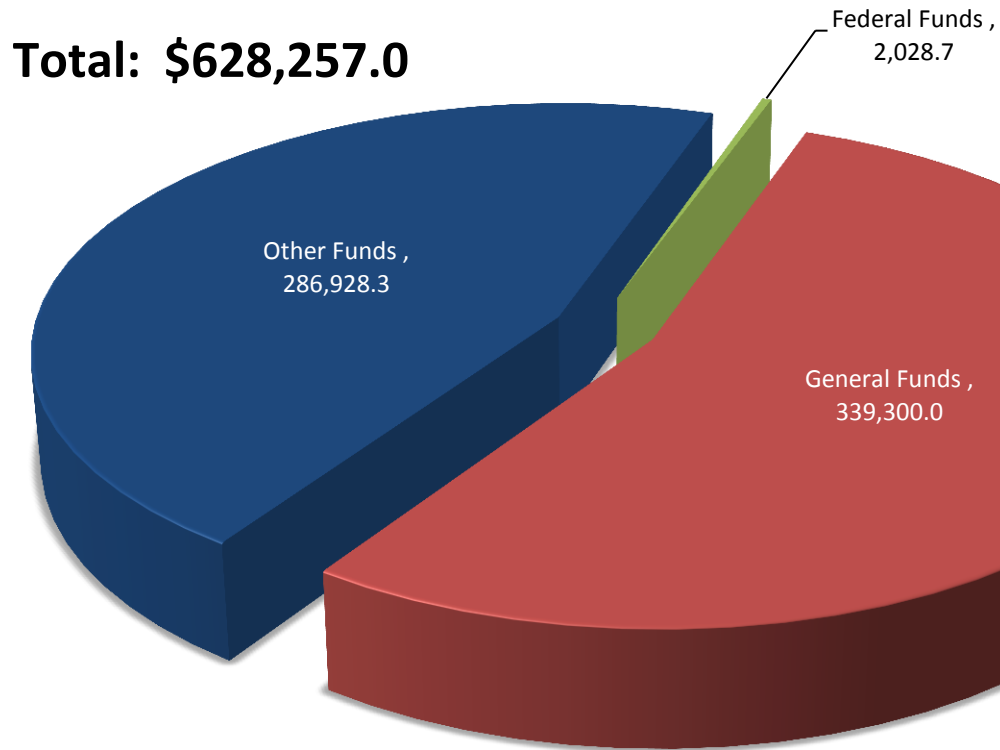
- Information Systems and Services Division
- Workforce Development
- Innovations/Efficiency Implementations



Kodiak Snow-blower Modification at Chandalar Station



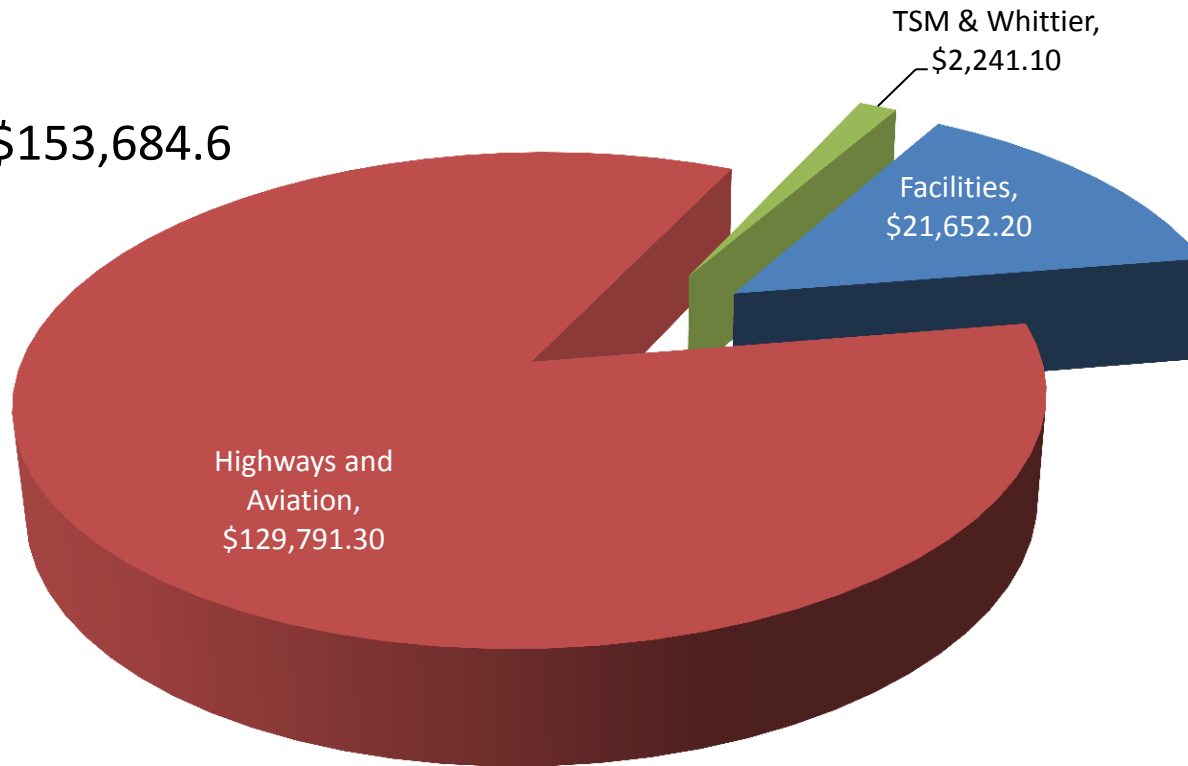
FY16 Operating Budget





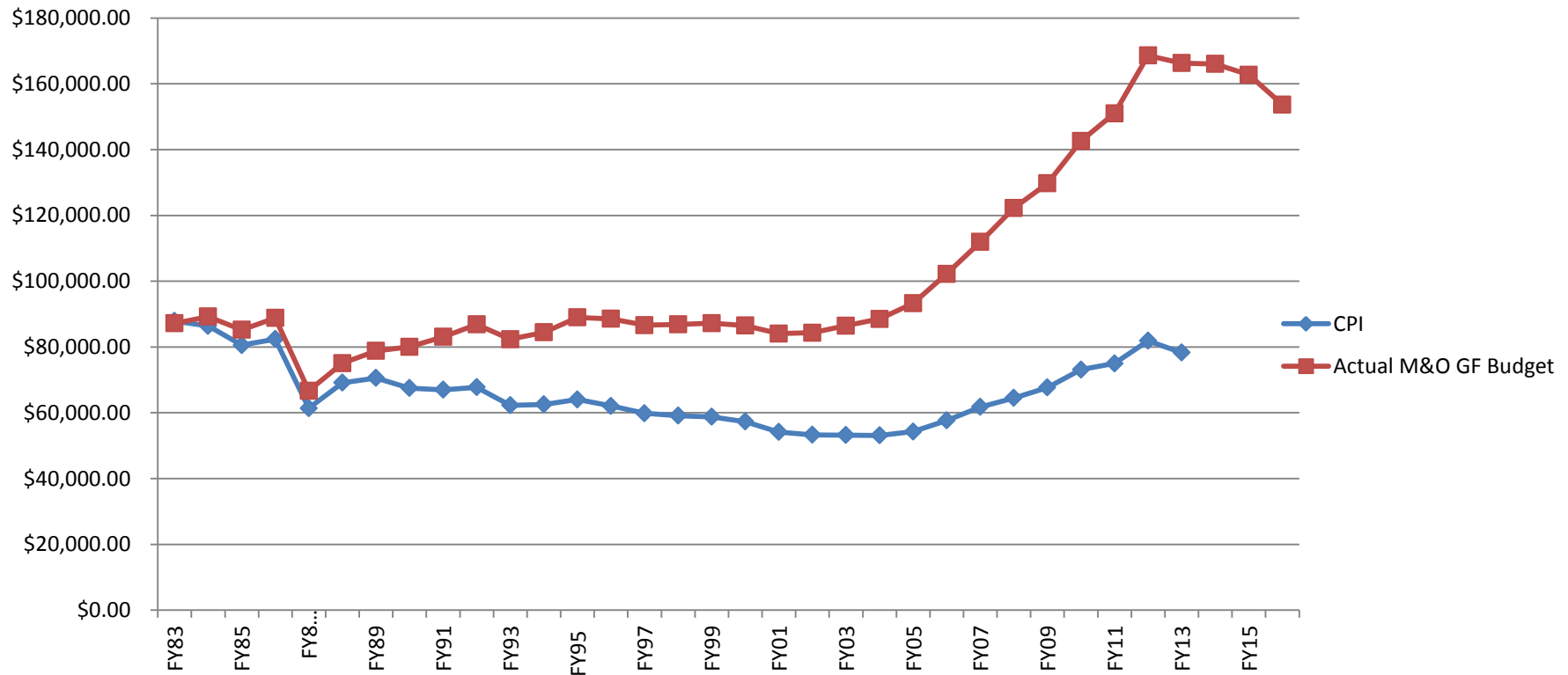
FY16 M&O GF Authorization

Total: \$153,684.6





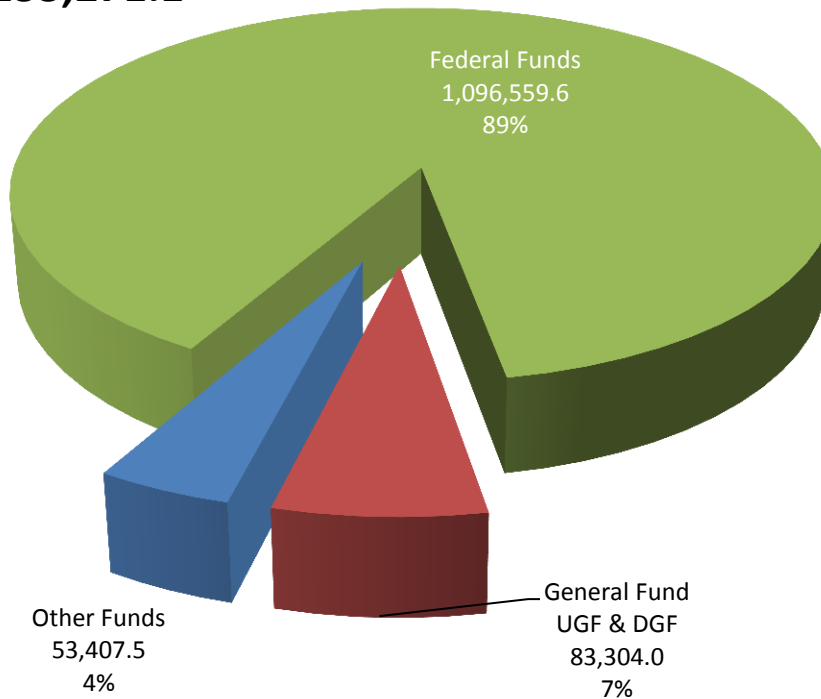
Historical Funding for M&O





FY16 Capital Budget

Total: \$ 1,233,271.1

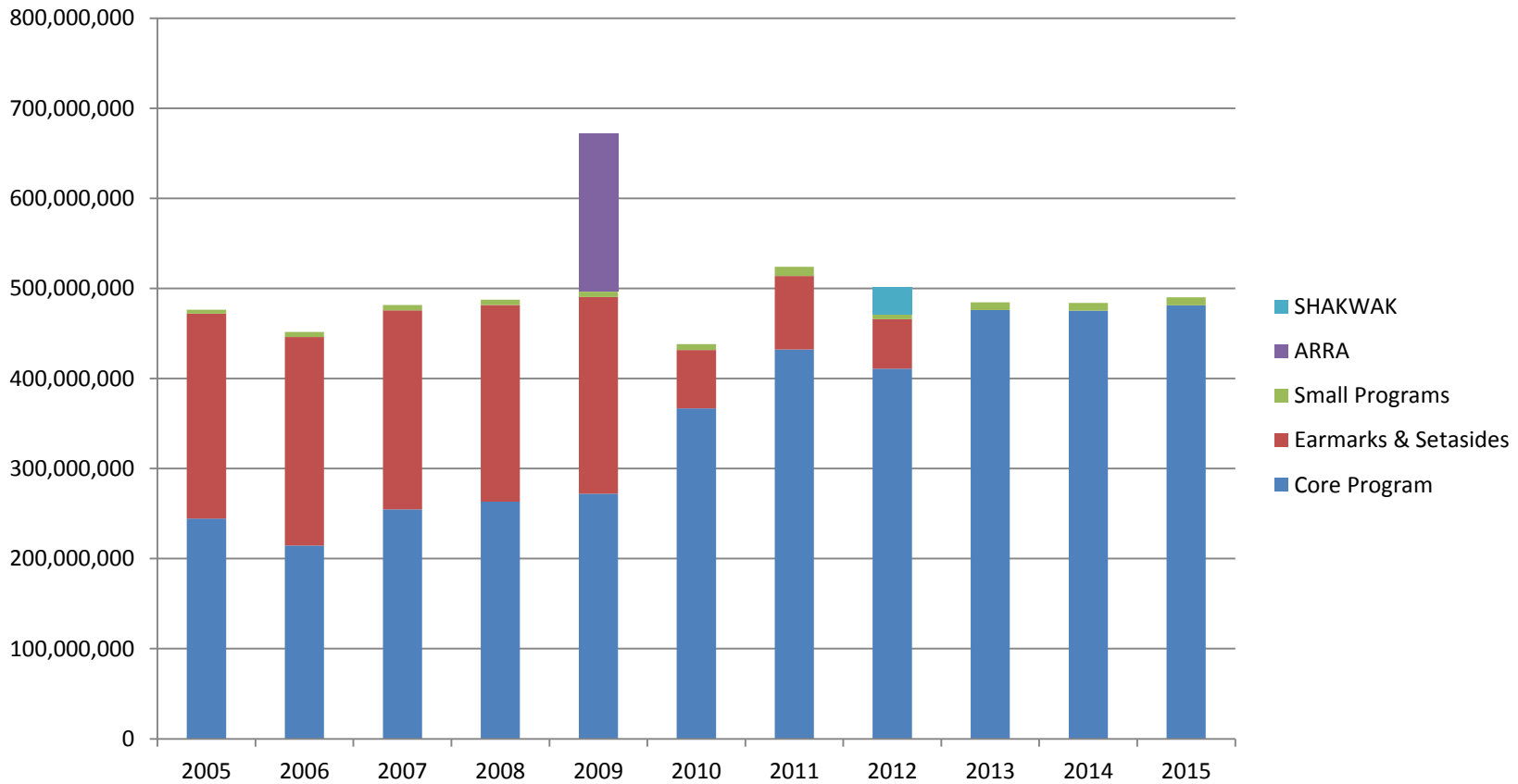


Federal Programs	Amounts
Aviation Program	\$125,939.6
Highway Program	\$891,120.0
Statewide Federal Programs	\$79,500.0

- **Federal Highway Program (FHWA)**
- Federal Aviation Program (FAA)
- Federal Transit Administration (FTA)
- National Highway Traffic Safety Administration (NHTSA)
- Federal Motor Carrier Safety Administration (FMCSA)

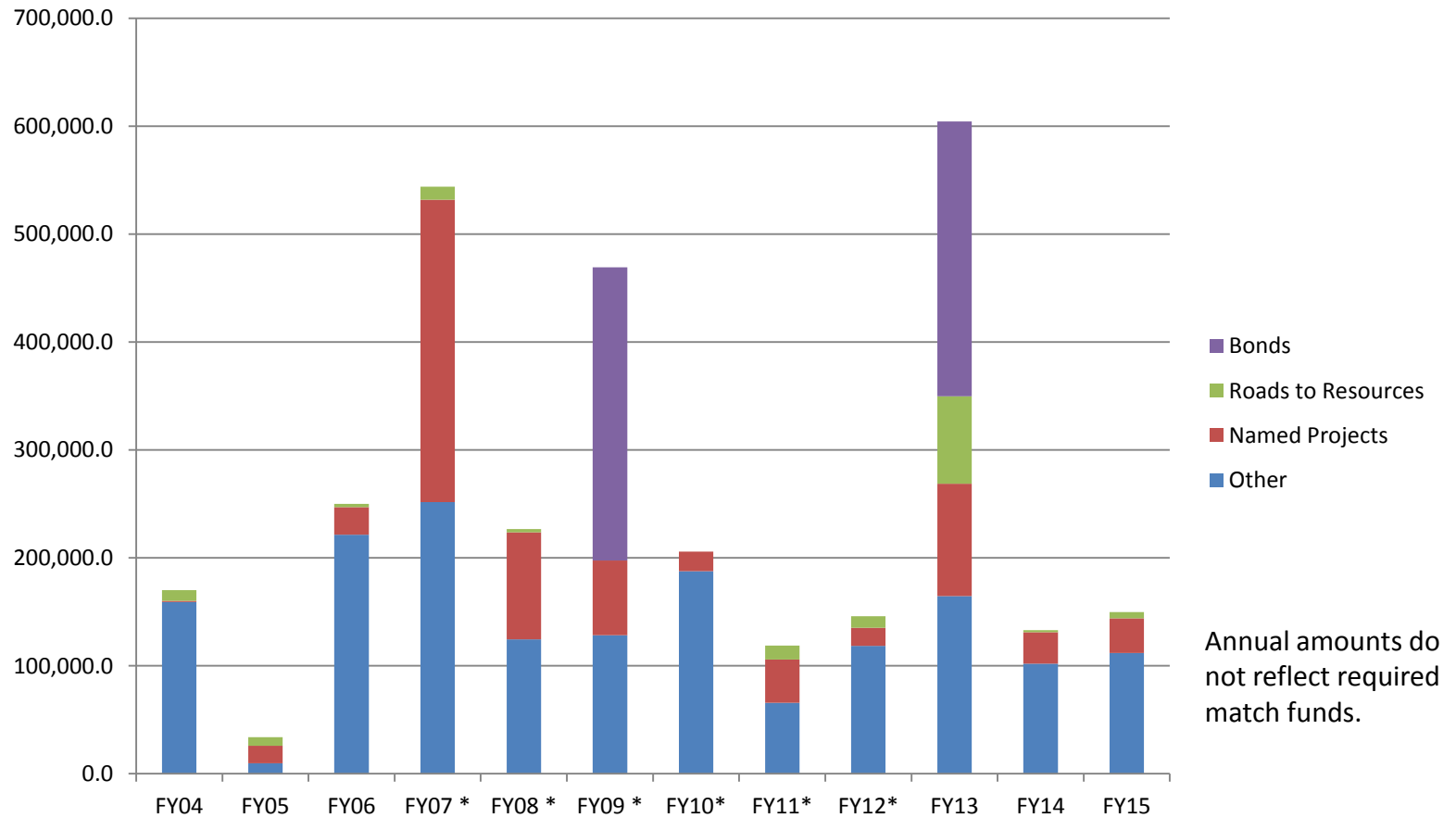


Federal Capital Program





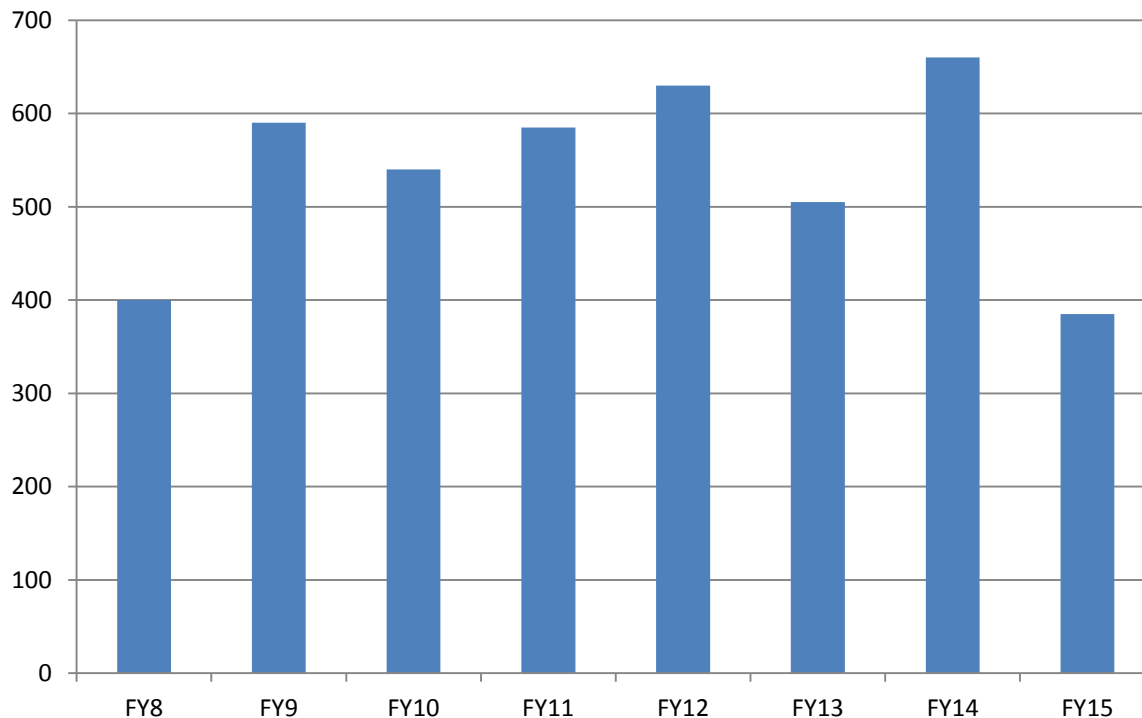
State Capital Program





DOT&PF Capital Construction Projects

Millions of Contract Awards



NOTE:

a. All construction awards (aviation, marine highways, highways, facilities)

b. All fund sources – State, GF, Federal

c. 2015 is estimated. - will likely be larger.

■ Millions of Contract Awards

<http://www.dot.state.ak.us/procurement/index.shtml>



HTF – Highway Trust Fund

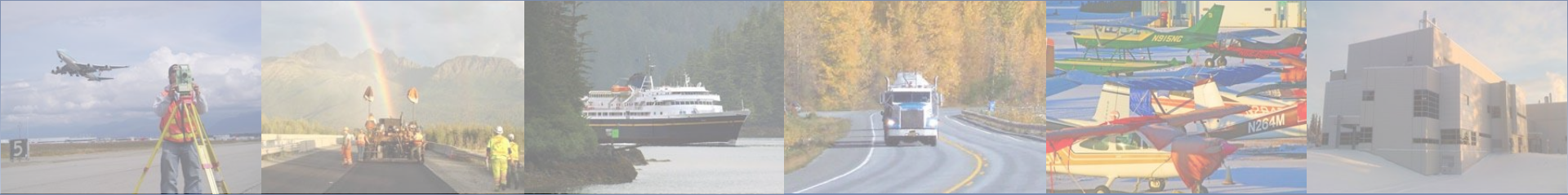
- Source of highway and transit (including ferry) funding state receives
- Historically a 100% user-fee program:
 - Fuel taxes, excise taxes
 - Rates charged unchanged in 22 years
- Changes in driving and fuel usage have reduced funding stream; now about 20% deficit and increasing annually



MAP-21 Funding

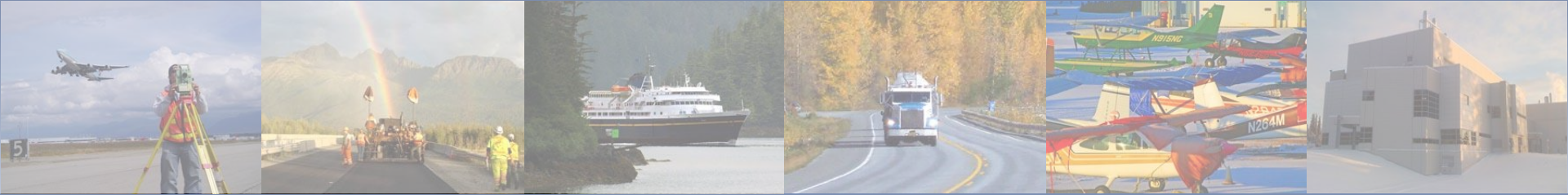
Moving Ahead for Progress in the 21st Century Act (MAP-21):

- 2-year authorization originally (2013 & 2014)
- Historically, program has always been continued and financed near prior levels
- Continued into 2015; only 8 months funding. Congress must extend in 2015
 - However, the Highway Trust Fund revenue continues to decline



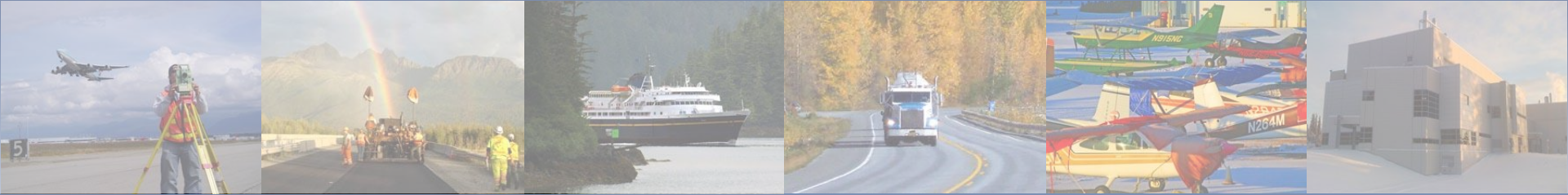
MAP-21 Funding

- Highway funding down from \$520 M to \$485 M
 - Similar reduction felt in all other states
- Transit funding at \$45 M, plus new ferry funding of about \$17 million
- Significant streamlining of funding categories
- Federal priorities based on funding allocations:
 - National Highway System (expanded)
 - Highway Safety
 - Meeting performance standards on NHS
 - Urban areas > 200,000 population



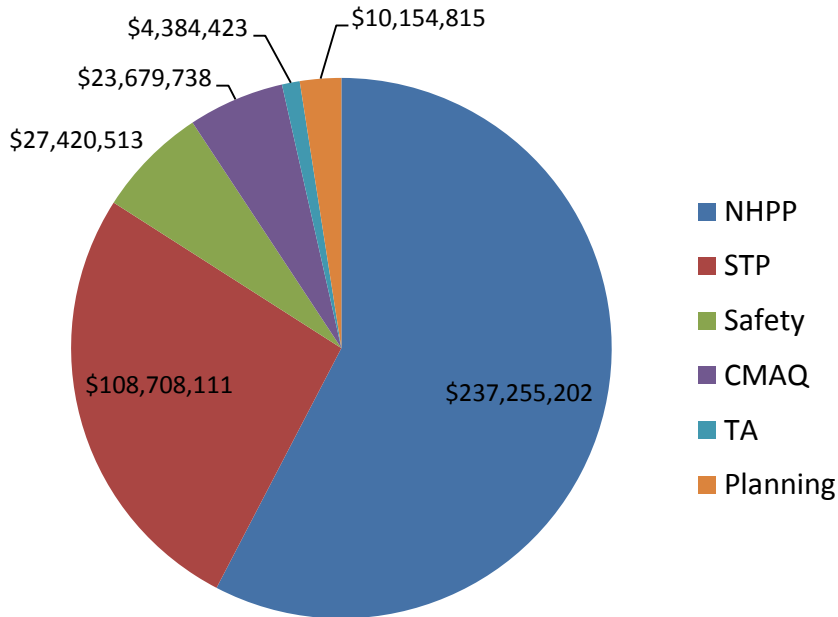
MAP-21 Redefines Federal Interest

- Federal-Aid System narrowed to just the Interstate and Nat'l Highway routes.
 - NHS broadened to include all Principal Arterials.
 - Added 90 miles (~4%) to Alaska NHS
- 57% of funding focused on the NHS
- 27% of funding focused on lower-tier roads
- 7% of funding directed to safety (+5% sanctions)
- 9% to several other minor categories

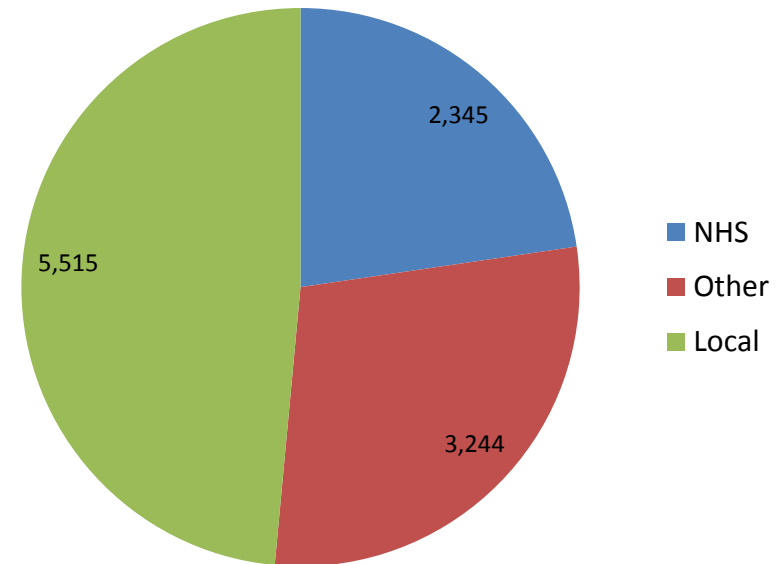


MAP-21 Emphasis is to National Highway System (NHS)

Federal-aid Funds*

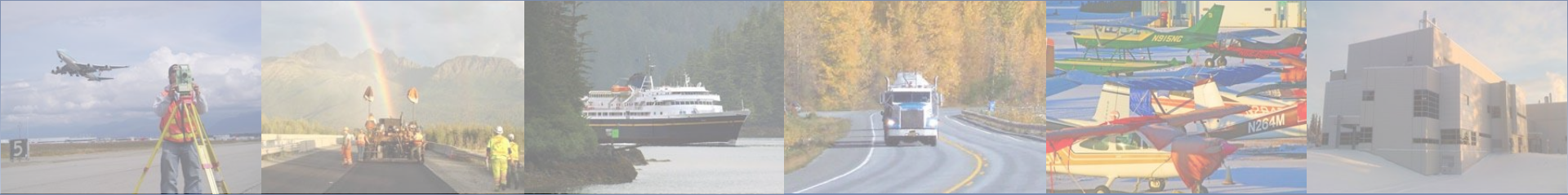


Miles of Road



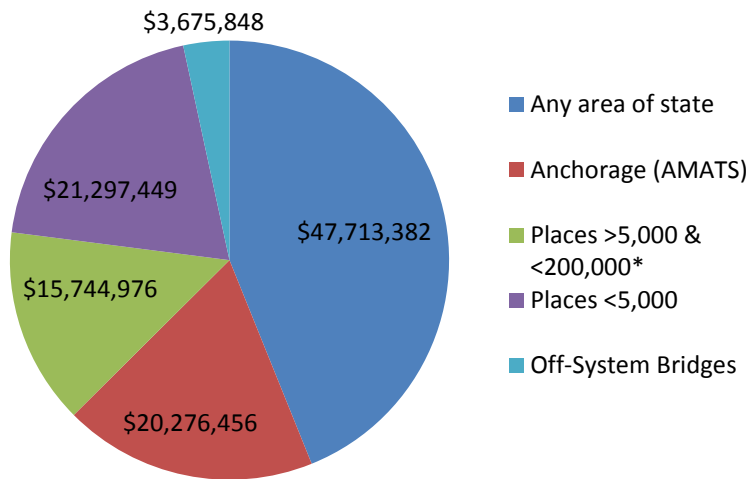
18% of Road Miles Garner 57% of Federal-aid Funding

(*Note: Dollar amounts based on current FY15)



MAP-21 Allocation to STP

MAP-21 STP Funds*



*Fairbanks, Juneau, Kenai, Ketchikan, Kodiak, Sitka, Palmer & Wasilla

- All non-NHS roads and other needs will compete for smaller share of funding.
- Dollars available per mile:
 - NHS = \$92,000/mile
 - Other, except local = \$32,100/mile
- Many required work items must be funded from STP also.

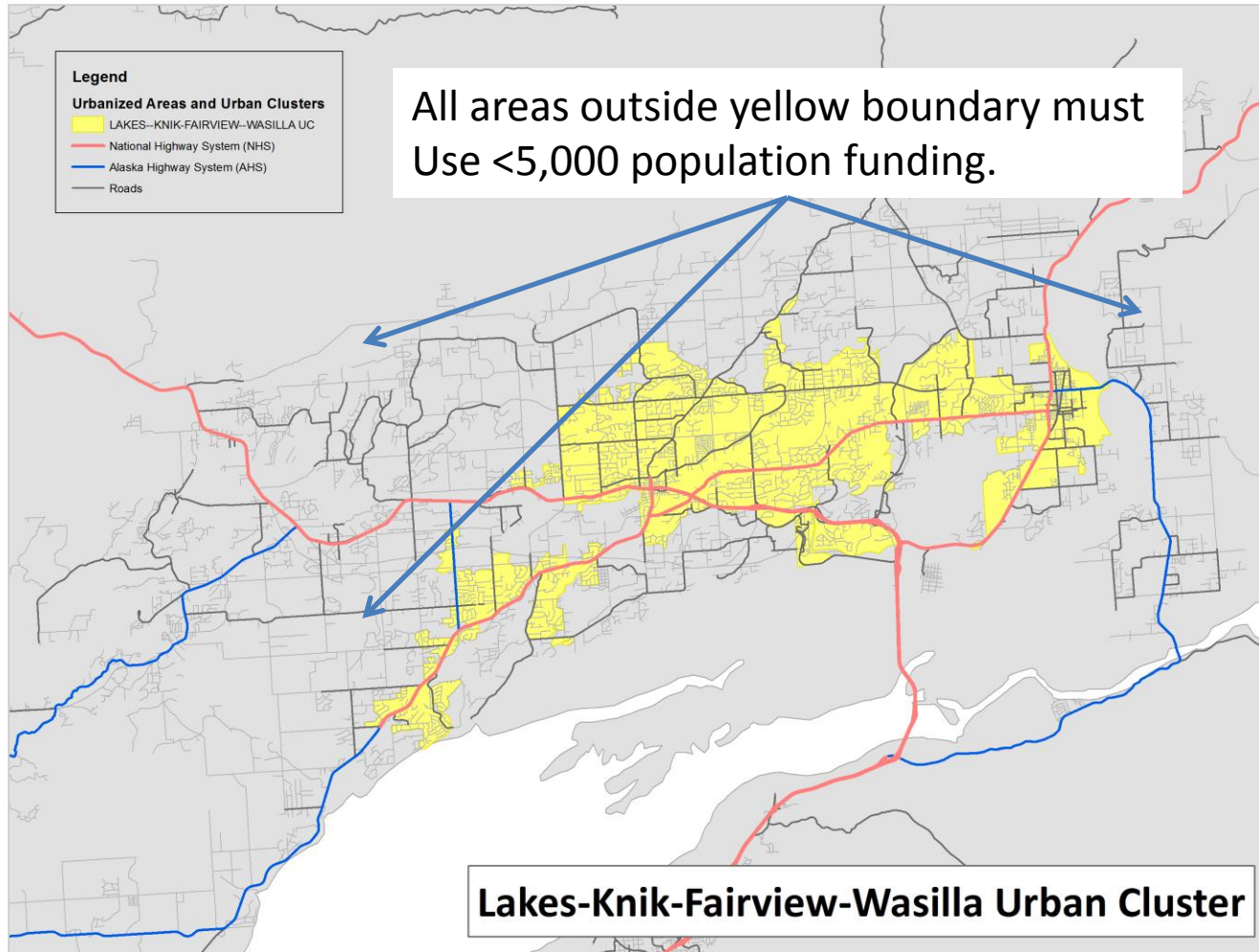
(*Note: Dollar amounts based on current FY15 Program)

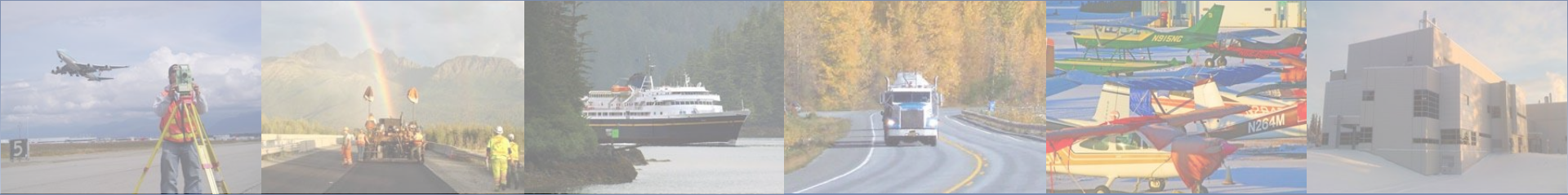


Understanding the Population Rules

- MAP-21 removed exemption for Alaska regarding population set-asides of STP funding.
- Except for Anchorage, all funding must be sourced-based on urban boundaries (aka *urban clusters*).
- Urban clusters are not based on municipal boundaries.

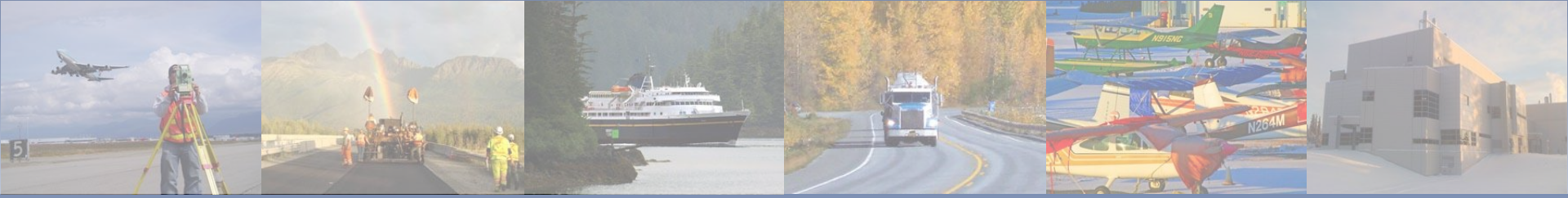
Mat-Su Urban Cluster





MAP-21 Eliminations

- Shakwak funding ends
 - \$30 M annually to Canada for Haines & Alaska Highways
 - Periodic method of funding AMHS needs
- Forest Highway program ends
 - \$9 M annually to build highways on Nat'l Forests
 - Replaced by \$7 M program on all federal lands (FLAP = Federal Lands Access Program)



Performance Mandate

- FHWA to set NHS Performance Measures for:
 - Pavements and Bridges
 - Safety
 - Freight Mobility
 - Congestion
- If NHS system conditions fall behind:
 - Must divert funding to better performance
 - Later, penalized with higher match requirement



DOT&PF Information Sources

- DOT Website <http://dot.state.ak.us/>
- 511 – Traveler Information (Road Conditions, RWIS...) <http://511.alaska.gov/alaska511/mappingcomponent>
- Navigator Construction Status - <http://alaskanavigator.org/>
- Active Project Status - <http://dot.alaska.gov/projects-status/>
- Links to Project Websites http://dot.alaska.gov/project_info/index.shtml
- State Transportation Improvement Program <http://www.dot.state.ak.us/stwdplng/cip/stip/index.shtml>



Contact Info

- kkim.rice@alaska.gov

Public Information Officers

- Juneau – jeremy.woodrow@alaska.gov
- Anchorage - jill.reese@alaska.gov
- Fairbanks - meadow.bailey@alaska.gov

Legislative Liaison

Connie.mckenzie@alaska.gov