



Alaska Department of Transportation & Public Facilities

Senate and House Transportation Committees

Captain John Falvey, AMHS General Manager

Matt McLaren, Business Development Manager

January 22, 2015



AGENDA

- **Alaska Marine Highway System Background Data**
- **Fiscal Year 2015 Look Forward**
 - **Dayboat Alaska Class Ferry**
 - **Reservations & Manifest System**

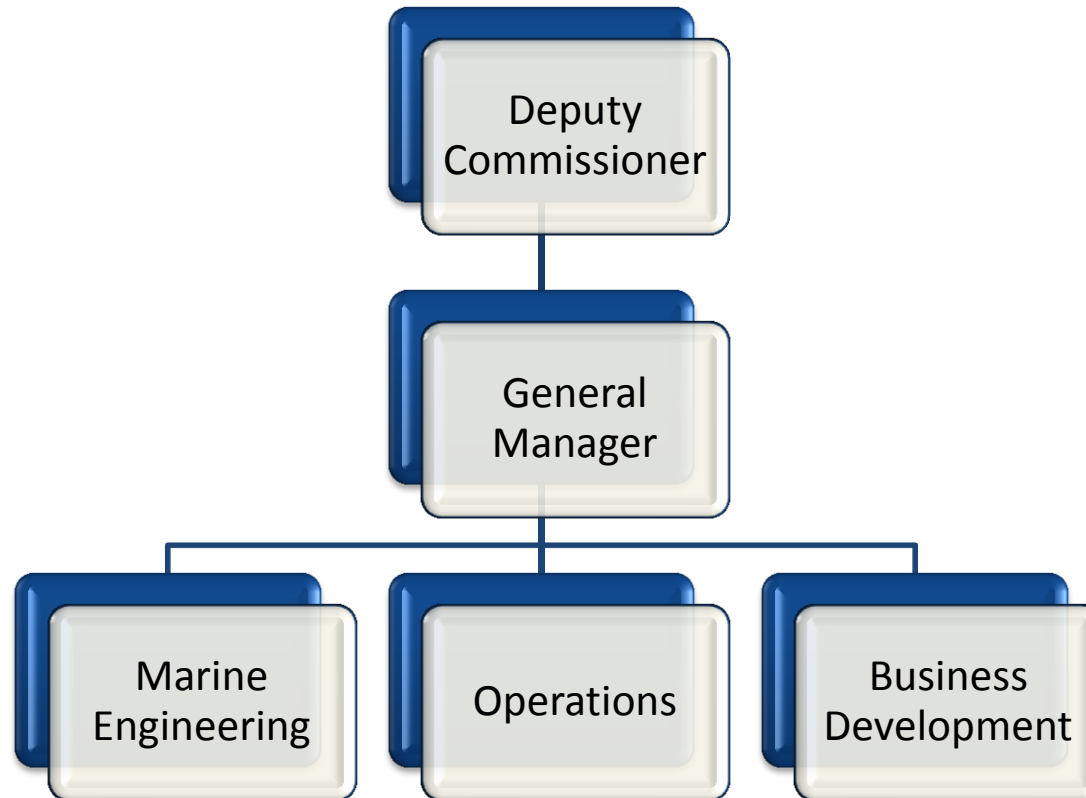


MISSION STATEMENT

DOT&PF:

“Keep Alaska moving through service and infrastructure.”

ORGANIZATION/LEADERSHIP



1,018 Personnel

- Vessel Operations - 840
- Shore-side Facilities (Terminals) - 87
- Marine Engineering - 24
- Reservations & Marketing - 23
- Administration - 44

FLEET COMPOSITION

Mainliners

MV Malaspina - 1963

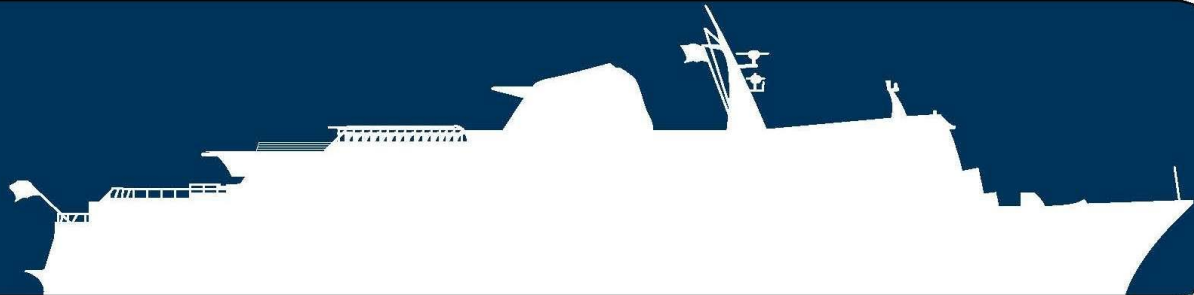
MV Taku - 1963

MV Matanuska - 1963

MV Tustumena - 1964

MV Columbia - 1974

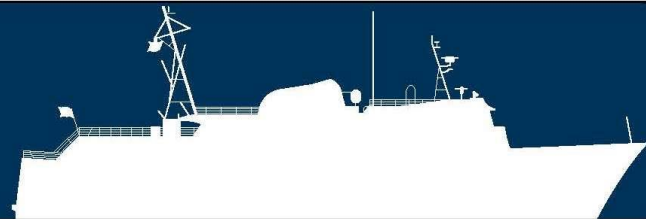
MV Kennicott - 1998



Aurora Class

MV LeConte - 1974

MV Aurora - 1977



Shuttle Ferries

FVF Fairweather - 2004

MV Lituya - 2004

FVF Chenega - 2005





TERMINAL COMPOSITION

- 35 ports of call ranging from Bellingham as the southern terminus, Valdez as the northern terminus, and Dutch Harbor as the western terminus.
 - 17 in Southeast Alaska, Canada, and Washington and 18 in Southcentral and Southwest Alaska
- Of the 35 ports of call:
 - 17 State owned facilities (12 manned / 5 unmanned)
 - 4 leased facilities (Bellingham, Prince Rupert, Seldovia and Kodiak)
 - 14 privately owned operating under a terminal use agreement
- Life extending capital projects managed by Southeast Region of DOT
- Annual maintenance managed by AMHS

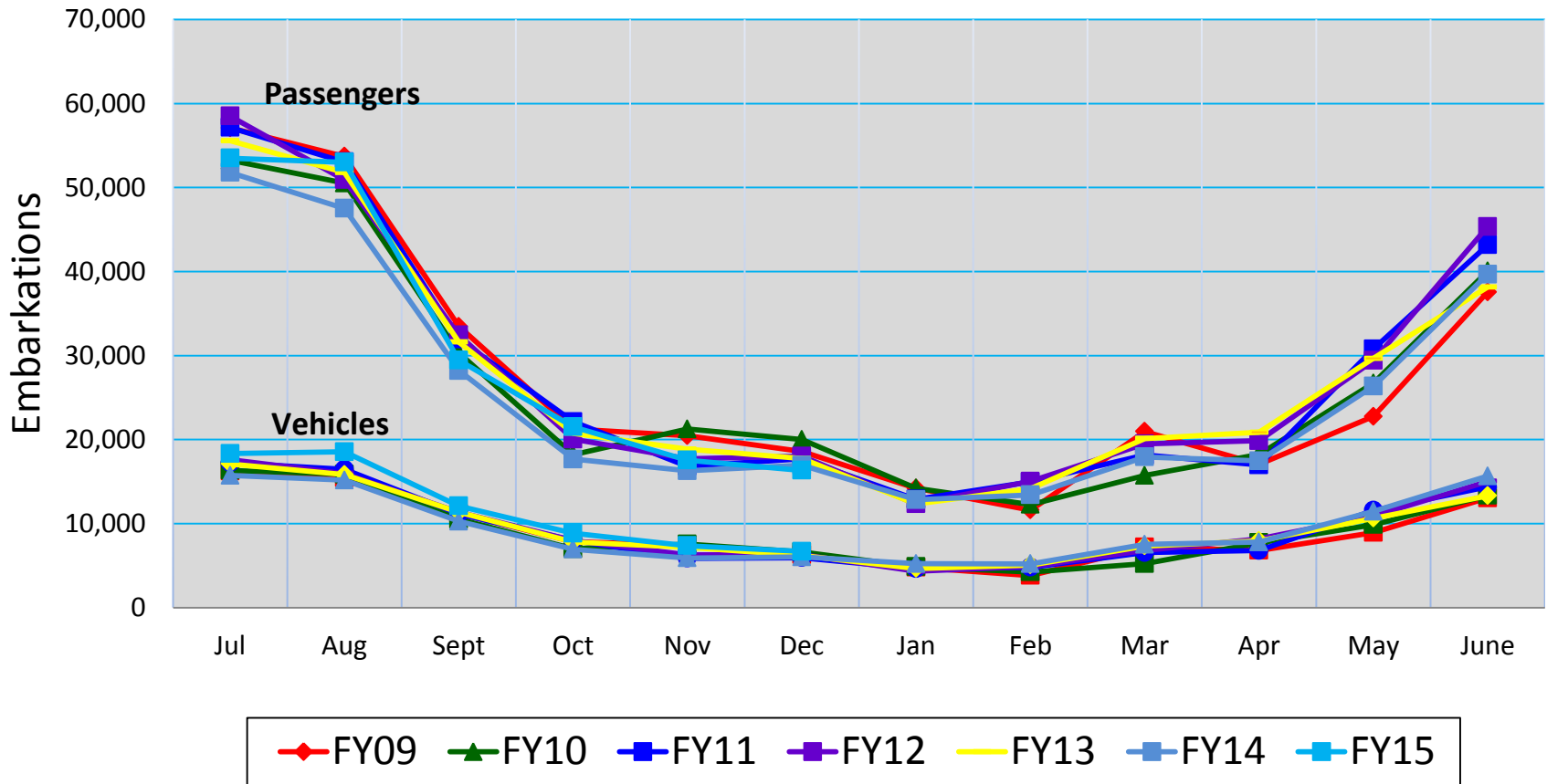
ROUTE SUMMARY



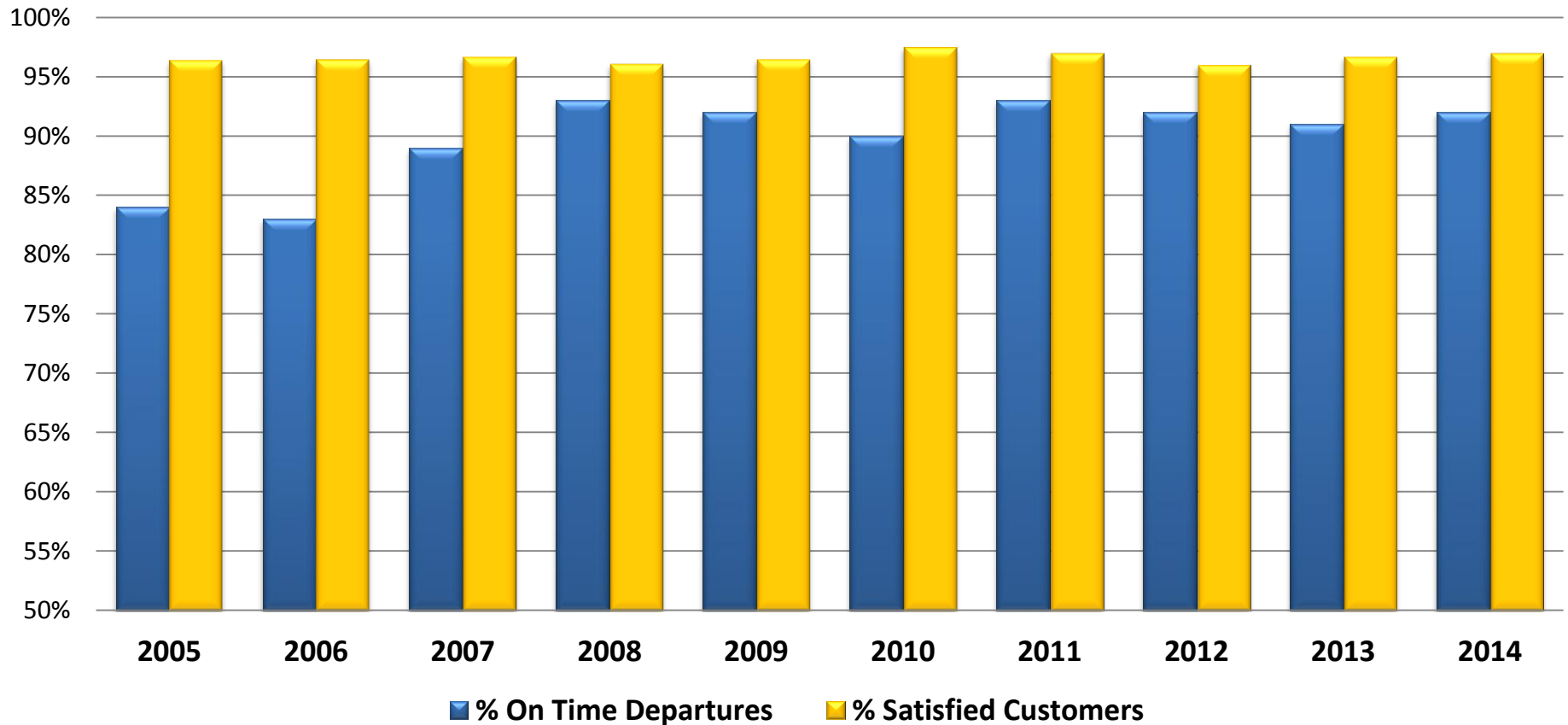
Alaska Marine Highway	Service Route:	3,500 miles
	Passengers:	340,000
	Vehicles:	115,000
BC Ferries	Service Route:	755 miles
	Passengers:	13,000,000
	Vehicles:	8,000,000
Washington State Ferry	Service Route:	200 Miles
	Passengers:	12,000,000
	Vehicles:	10,000,000

MONTHLY TRAFFIC ACTIVITY

AMHS
 FY09 – FY15 YTD
 Monthly Embarkations
 As of December 31, 2014



ON-TIME DEPARTURES/CUSTOMER SATISFACTION

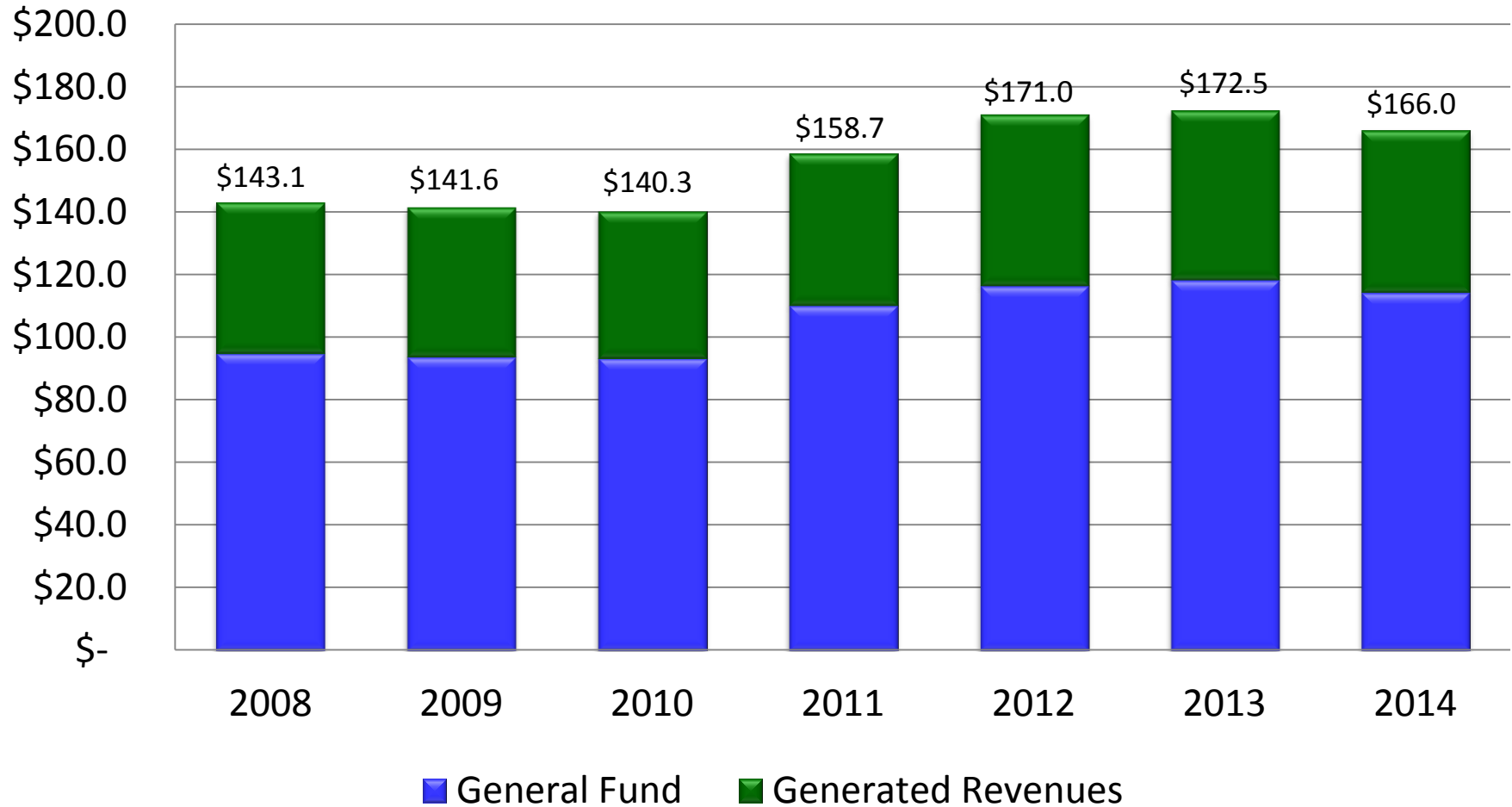


* Online Automatic Reservations System (OARS) usage has increased from 18.5% - 41.0% for the period 2005 through 2014.

OPERATING EXPENDITURE ANALYSIS*

FY08 – FY14

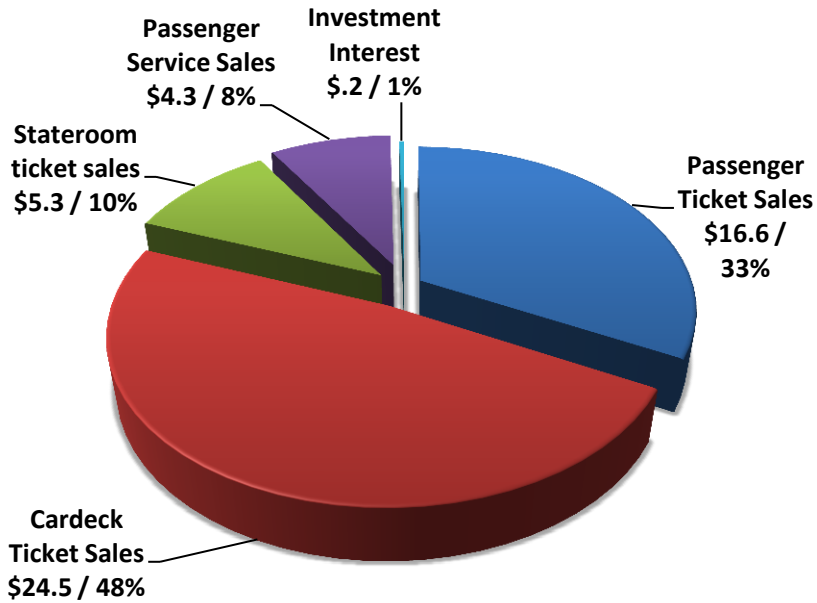
Millions



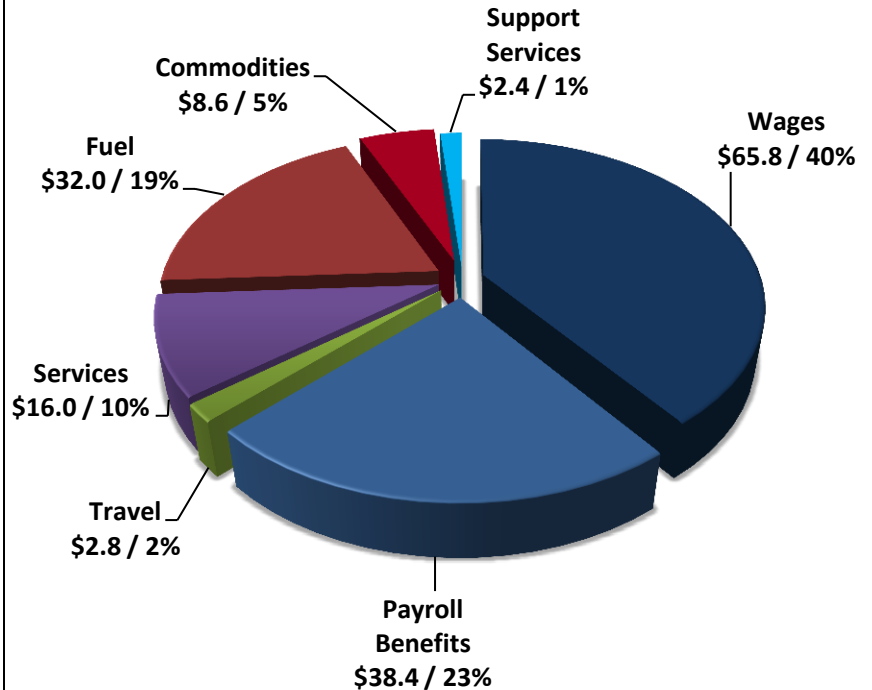
*Does not include \$12.0 - \$15.0 Million in overhaul and deferred maintenance funded through the GF Capital Budget.

FY14 REVENUES & COSTS

AMHS
FY2014 Revenue Sources (\$50.9)
 (in Millions)



AMHS
FY2014 Annual Operating Costs (\$166.0)
 (in Millions)





FY15 LOOK FORWARD

- **Current Status:**

Managing to the budget

Traffic numbers have improved – currently 7% above FY14

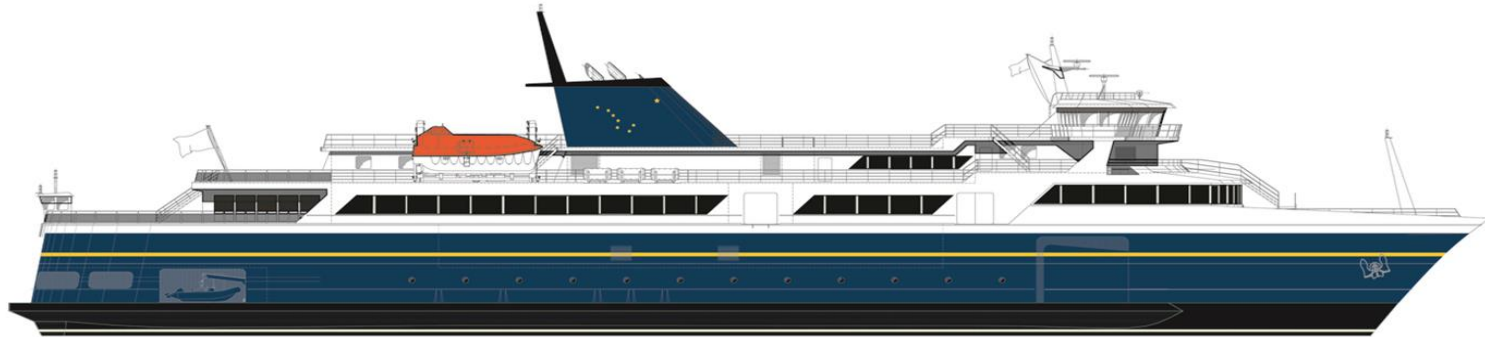
Minimal mechanical casualties – some weather cancellations

Tariff increase of 4.5% implemented on summer 2015
schedule

Dayboat Alaska Class Ferry

Reservations & Manifest System

DAYBOAT ALASKA CLASS FERRIES



- **Construction contract signed early October 2014 – Due 2018**
 - Ferries will be 280-feet long
 - Seat up to 300 passengers
 - Carry 53 standard vehicles
 - Feature bow and stern doors
 - Enclosed car decks
 - Controllable pitch propellers to maximize maneuverability and efficiency.

RESERVATIONS & MANIFEST SYSTEM

Carus



- Project kicked off in October 2014
- The system is estimated to be fully implemented by October 1, 2015
- Carus works with 28 ferry operators spread over 13 countries
 - Operators in the Baltic, UK, mainland Europe, Africa, Australia, and the US
 - Clients cover every aspect of the ferry industry and operate virtually every type of vessel

THE CARRES SYSTEM



- The CarRes system will allow AMHS to:
 - Automate check-in and boarding as needed
 - Create routines for Customer Relationship Management
 - Apply industry standards for business processes and streamlined operations in:
 - Ticketing, e-tickets, and ticketless travel
 - Check-in & boarding via the use of handheld wireless scanners to check in vehicles and passengers
 - Automation of processes
 - Integration with other AMHS/SOA systems

Questions?



Captain John Falvey - General Manager
Alaska DOT&PF, AMHS
(907) 228-7250
John.Falvey@Alaska.gov

Matt McLaren – Business Development Mgr
Alaska DOT&PF, AMHS
(907) 228-7274
Matt.McLaren@Alaska.Gov