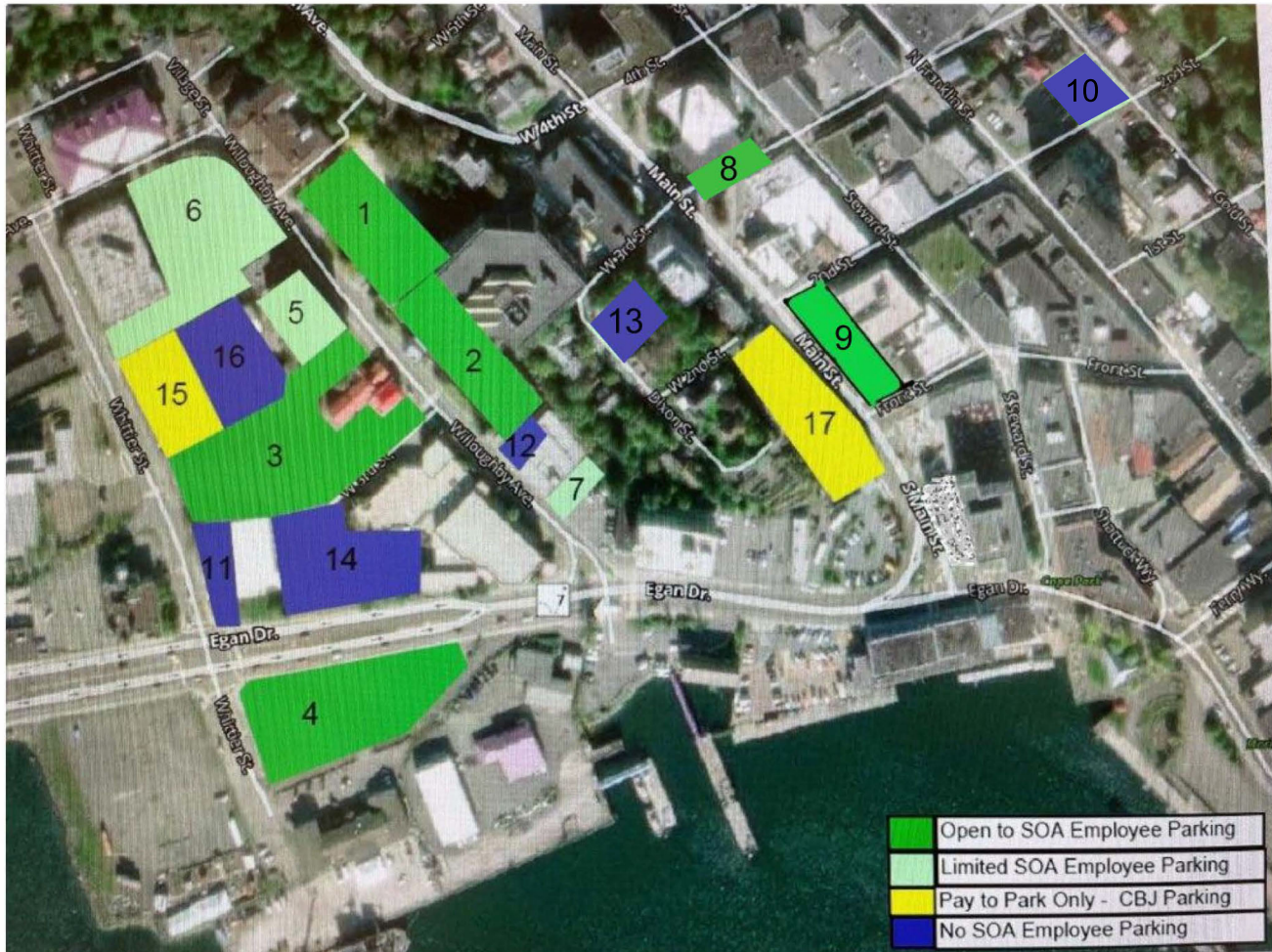


Juneau Core Area Parking



1. State Office Building North Garage

Refer to detailed SOB Parking Garage Map

2. State Office Building South Garage

Refer to detailed SOB Parking Garage Map

3. 2625 Lot

99 spaces for SOA employee parking

4. Subport Lot

Open spaces for SOA employee parking

5. 400 Willoughby Lot

20 open spaces for DNR employee parking

6. 410 Willoughby Lot

Parking reserved for building lease occupants only

7. Facilities Parking Lot

11 assigned spaces for Facilities Center staff

8. Community Building Lot

Parking reserved for Community Building occupants

9. Front & Main Lot

18 open spaces for SOA employees
1 space reserved for accessible parking

10. 2nd & Gold Lot

21 spaces reserved for Legislative and Office of the Governor employee parking, 1 space reserved for accessible parking. Lot is unavailable for SOA employees.

11. JACC Lot

Reserved for JACC employee parking

12. Facilities Loading Lot

Unavailable for SOA employee parking

13. Telephone Hill Lot

Reserved parking for SOA officials (posted)
Unavailable for SOA Employee parking

14. New Centennial Hall Lot

Unavailable for SOA employee parking

15. PSB Lot

Pay parking available

16. Zach Gordon Lot

Unavailable for SOA employee parking

17. DTC Garage

Pay parking available