



Juneau Glacier Highway Highway (Lemon Creek Area) Improvements Project #68124

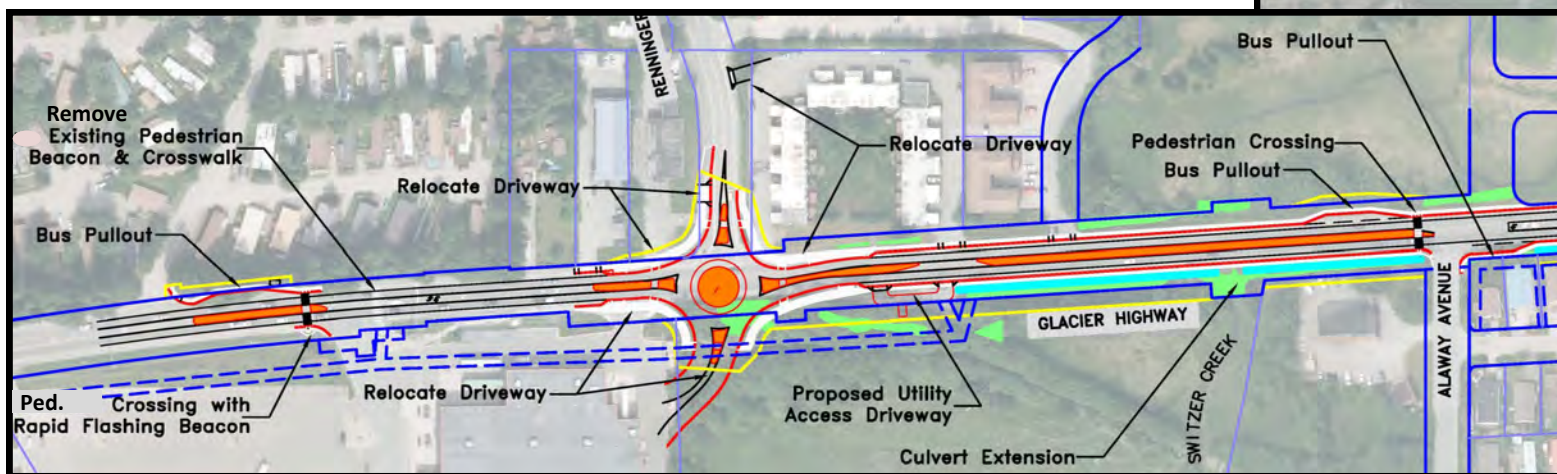
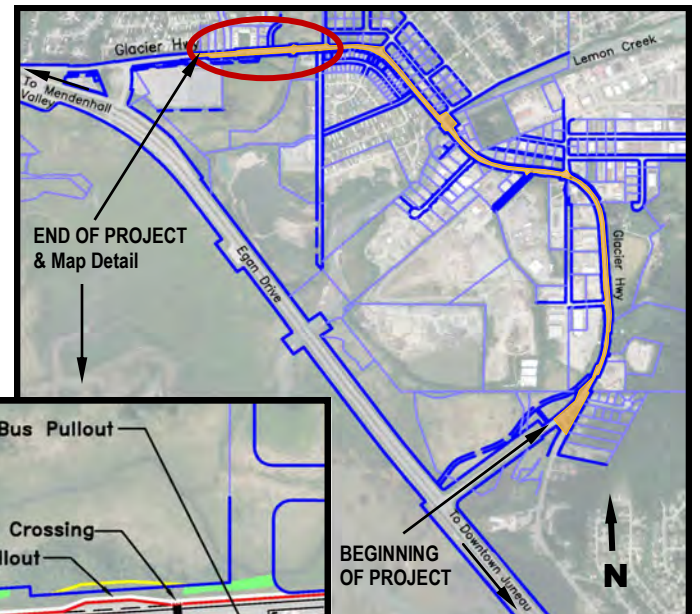
**DOT & PF
INVITES YOU
to an
OPEN HOUSE**

**Thursday, March 3, 2016
5:00 pm to 7:00 pm
Gruening Park Recreational Center
1800 Northwood Drive, Juneau**

**YOUR
COMMENTS ARE
GREATLY
APPRECIATED**

Alaska Department of Transportation and Public Facilities (DOT&PF) proposes a federally funded project that would resurface and improve Glacier Highway from Glacier Highway Access Road (near the old Walmart) to the intersection with Vanderbilt Rd and Glacier Hwy heading to Twin Lakes.

Glacier Highway, in the Lemon Creek area, is heavily traveled by pedestrians and bicyclists despite inadequate facilities for both. The purpose of this project is to make the road more accessible to pedestrians, including those with disabilities and to improve mobility of bikers and transit users while maintaining the level of service to vehicular traffic.



**Maps of the
entire proposed
project will be
available at the
open house.**

The proposed project would

- Resurface the entire length of the roadway
- Convert the Renninger St. intersection to a roundabout
- Add a traffic signal to the Davis Ave. intersection
- Add a sidewalk on the seaward water side of Glacier Hwy and lighting as needed
- Add pedestrian crossings at various locations along the corridor
- Relocate and improve bus pullouts
- Add a bicycle crossing at the intersection with Vanderbilt Rd and Glacier Hwy heading to Twin Lakes
- Address drainage needs
- Consolidate driveway access where appropriate
- Replace CBJ sanitary sewer force main between Anka St and Davis Ave.
- Relocate CBJ sanitary sewer lift station near the Renninger St. Intersection

The project improvements would require permanent acquisition of portions of privately and publicly owned properties for right-of-way (ROW). This would require permanent acquisition of approximately 64 partial parcels with some duplication.

DOT &PF staff will be available to answer questions.

Your comments would help us in evaluating the potential environmental, social and economic impacts of this project as well as its impacts to historic and cultural resources.

Please Submit your written comments to:

Jill Taylor, Environmental Analyst
DOT&PF, Southcoast Region
P.O. Box 112506
Juneau AK 99811-2506

E-mail: jill.taylor@alaska.gov
Phone: 907-465-4524
FAX: 907-465-3506

**Written comments will be accepted
by mail, email and fax
until 4:30 pm on April 1, 2016**

If you or someone you represent requires special accommodations in order to attend this open house, please call or email the project coordinator or call Alaska Relay and ask the communications assistant to assist you.

(800) 770-8973 for TTY (800) 770-3919 for ASCII (800) 770-8255 for Voice (866) 355-6198 for STS