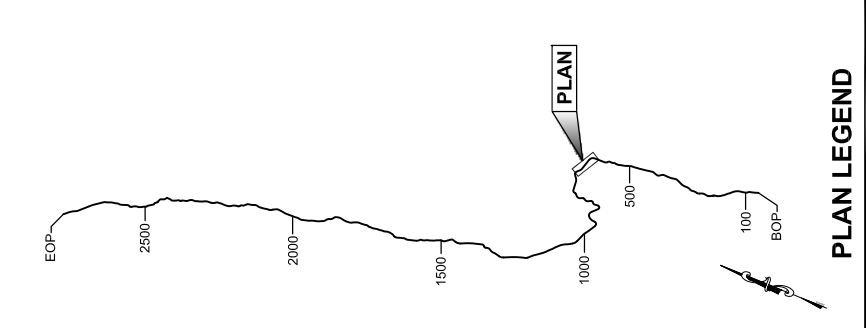


PATH: C:\UNITS\10\08\10-2013 EIS DWG\SR7100_2013 EIS
 GEARY, NATE (DOT)
 TAB: EL8\Friday, October 04, 2013 12:42:53 PM

RECORD OF REVISIONS		
NO.	DATE	DESCRIPTION

APPENDIX NUMBER
 ATTACHMENT NUMBER



DRAFT

DESIGNED BY:
 DRAWN BY:

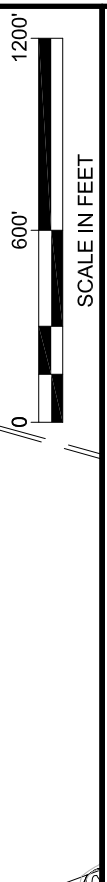
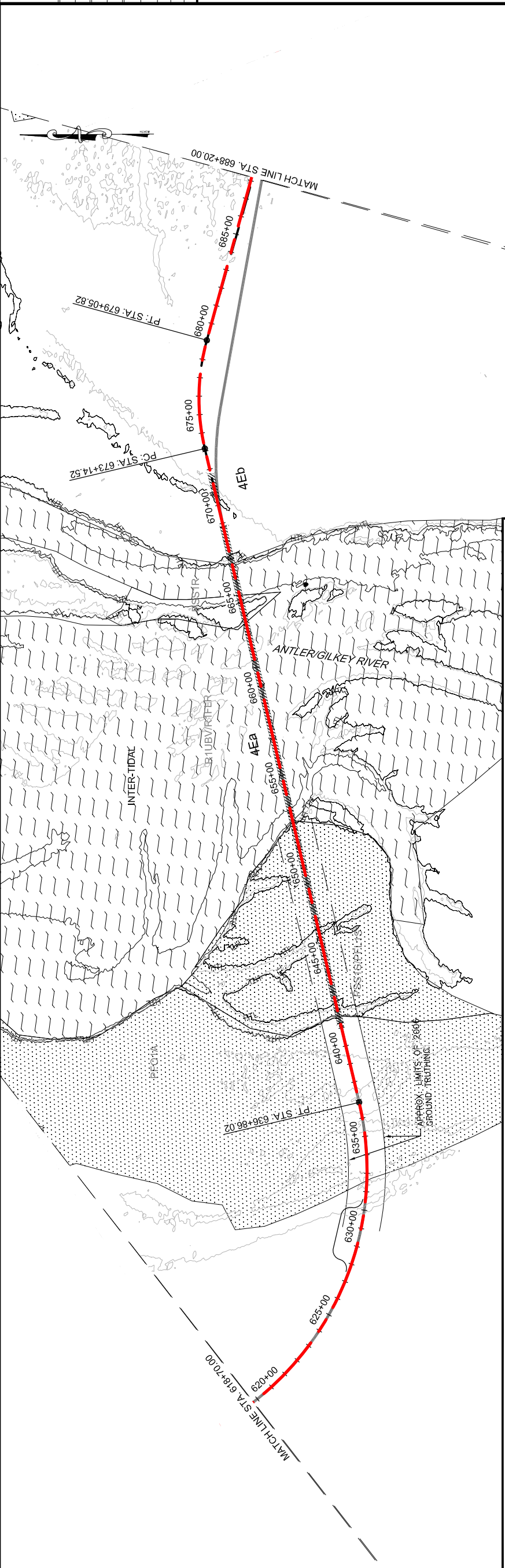
STATE OF ALASKA
 DEPARTMENT OF TRANSPORTATION
 & PUBLIC FACILITIES
 SOUTHEAST REGION

**JNU-EAST LYNN CANAL
 HIGHWAY ALTERNATIVE 2B
 PROJECT #71100**

**2013 EIS
 PLAN VIEW**

PROJECT DESIGNATION
71100

STATE	ALASKA
YEAR	2013
SHEET NUMBER	EL8
TOTAL SHEETS	38



LEGEND

	CURRENT ALIGNMENT
	PROPOSED FILL SLOPE
	PROPOSED CUT SLOPE
	PROPOSED WALL
	2006 FEIS ALIGNMENT
	2008 CORP PERMIT ALIGNMENT

GEO HAZARD AREA LEGEND

DF: DEBRIS FLOW
 HR: HAZARD ROCK
 LS: LAND SLIDE
 RF: ROCK FALL
 RS: ROCK SLIDE
 SR: SOIL RAVELING

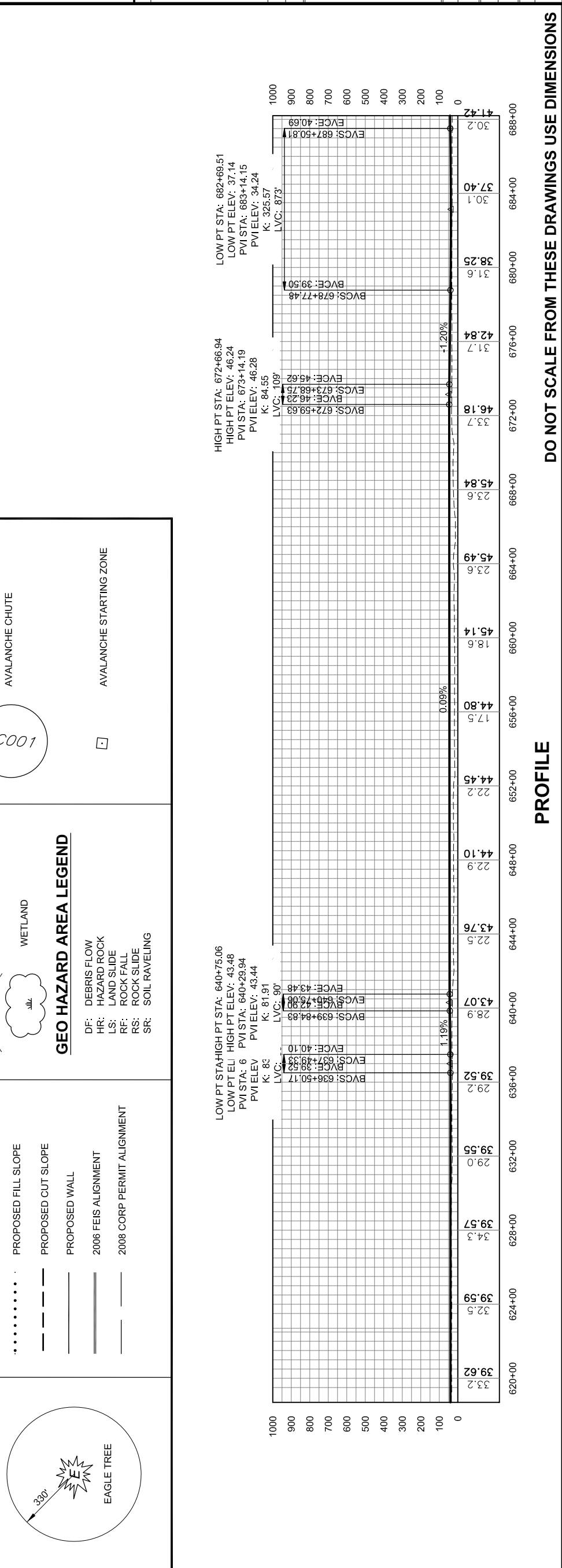
BRIDGES

WETLAND

1007

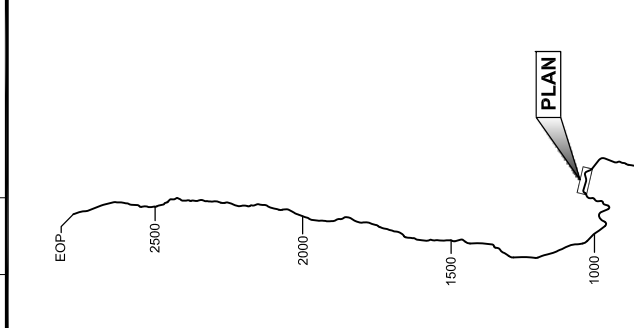
AVALANCHE CHUTE

AVALANCHE STARTING ZONE



This page intentionally left blank.

PATH: C:\UNITS\10\DRS\10-2013 EIS DWGSET\100_2013 EIS
 GEARY, NATE (DOT)
 TAB: EL9\Friday, October 04, 2013 12:43:23 PM
 APPENDUM NUMBER
 ATTACHMENT NUMBER
 RECORD OF REVISIONS
 DATE DESCRIPTION



PLAN LEGEND
 CHECKED BY:

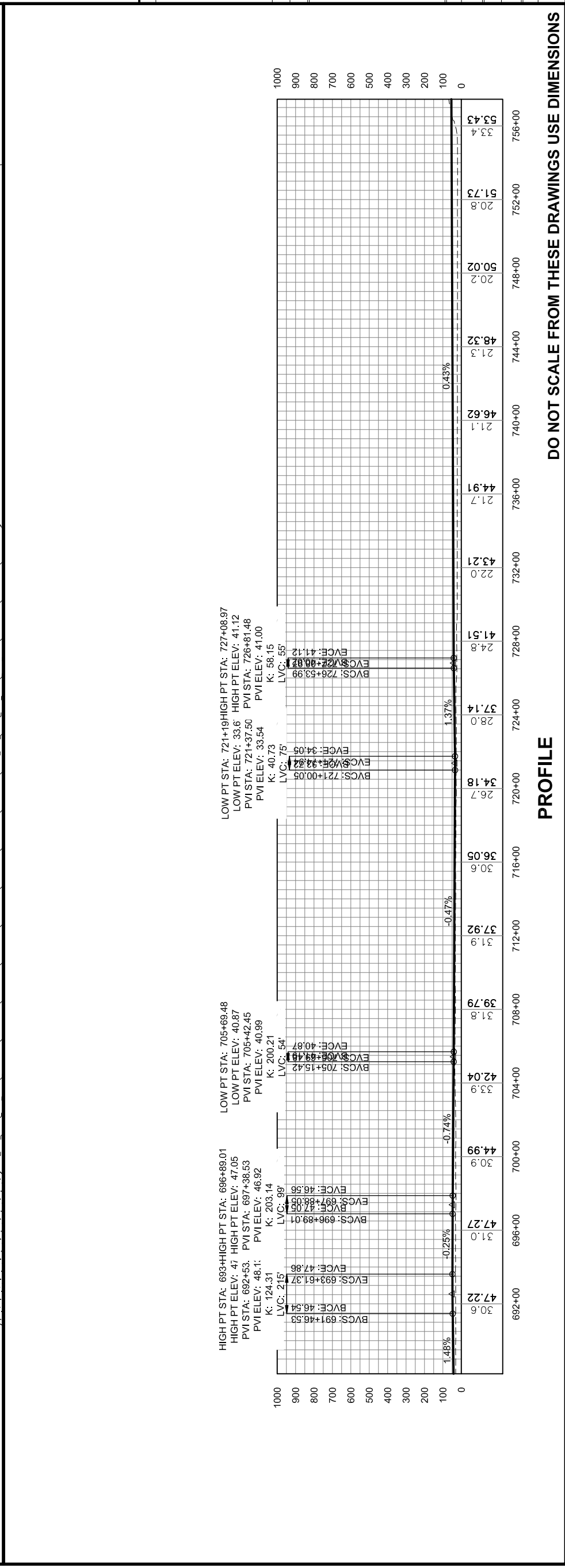
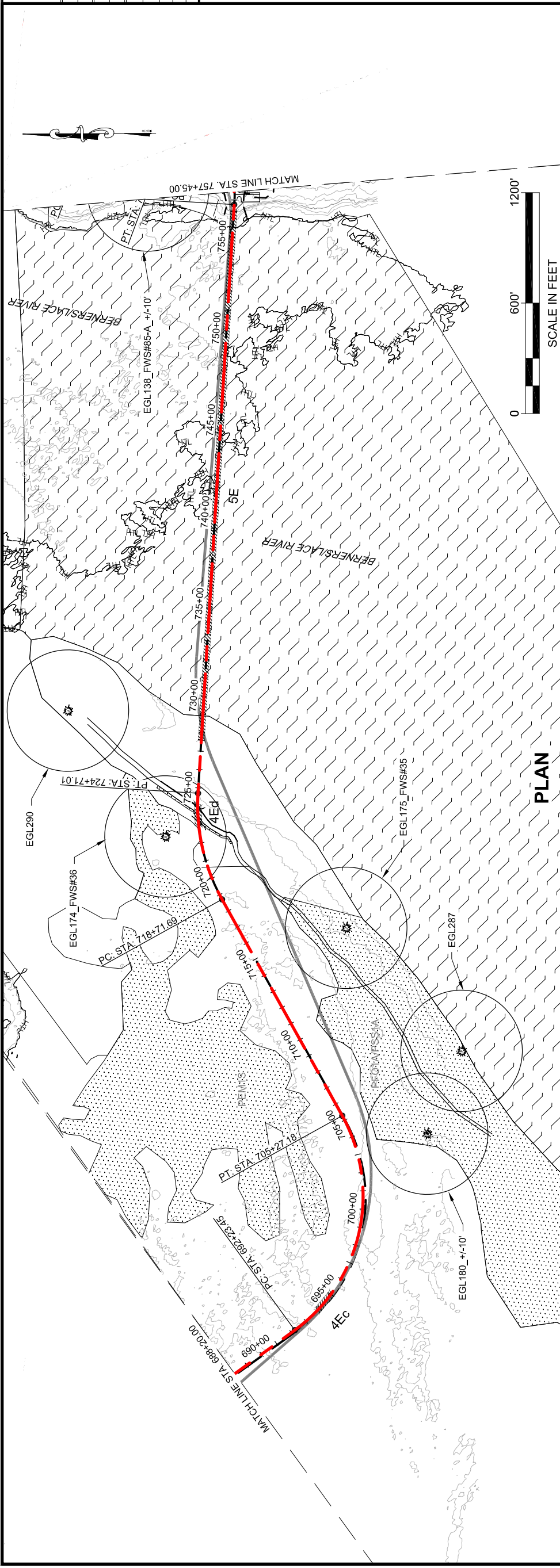
DRAFT

DESIGNED BY:
 DRAWN BY:
 STATE OF ALASKA
 DEPARTMENT OF TRANSPORTATION
 & PUBLIC FACILITIES
 SOUTHEAST REGION
 JUNEAU-EAST LYNN CANAL
 HIGHWAY ALTERNATIVE 2B
 PROJECT #71100

**2013 EIS
 PLAN VIEW**

PROJECT DESIGNATION
71100

STATE	ALASKA	YEAR	2013
SHEET NUMBER	EL9	TOTAL SHEETS	38



PROFILE
 DO NOT SCALE FROM THESE DRAWINGS USE DIMENSIONS

This page intentionally left blank.

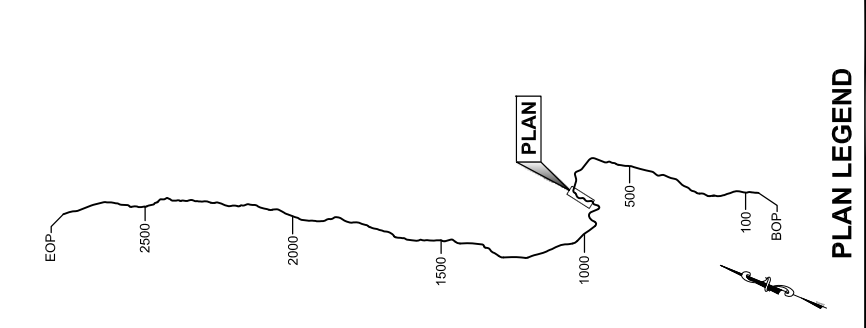
PATH: C:\UNITS\10\DRS\10-2012 EIS DWGSET\1100_2013 EIS
EAST LYNN PLANS.DWG

GEARY, NATE (DOT)
TAB: EL1 Friday, October 04, 2013 12:43:53 PM

APPENDUM NUMBER

ATTACHMENT NUMBER

RECORD OF REVISIONS		
NO.	DATE	DESCRIPTION



CHECKED BY:

DRAFT

DESIGNED BY:
DRAWN BY:

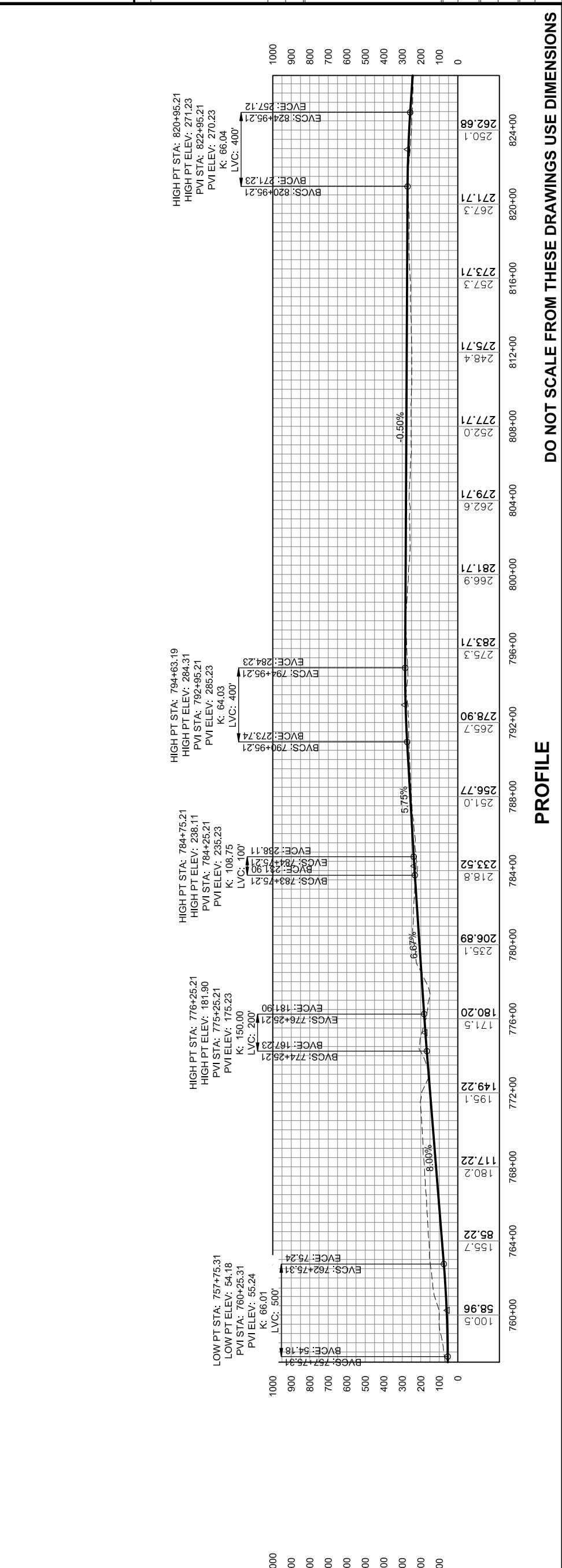
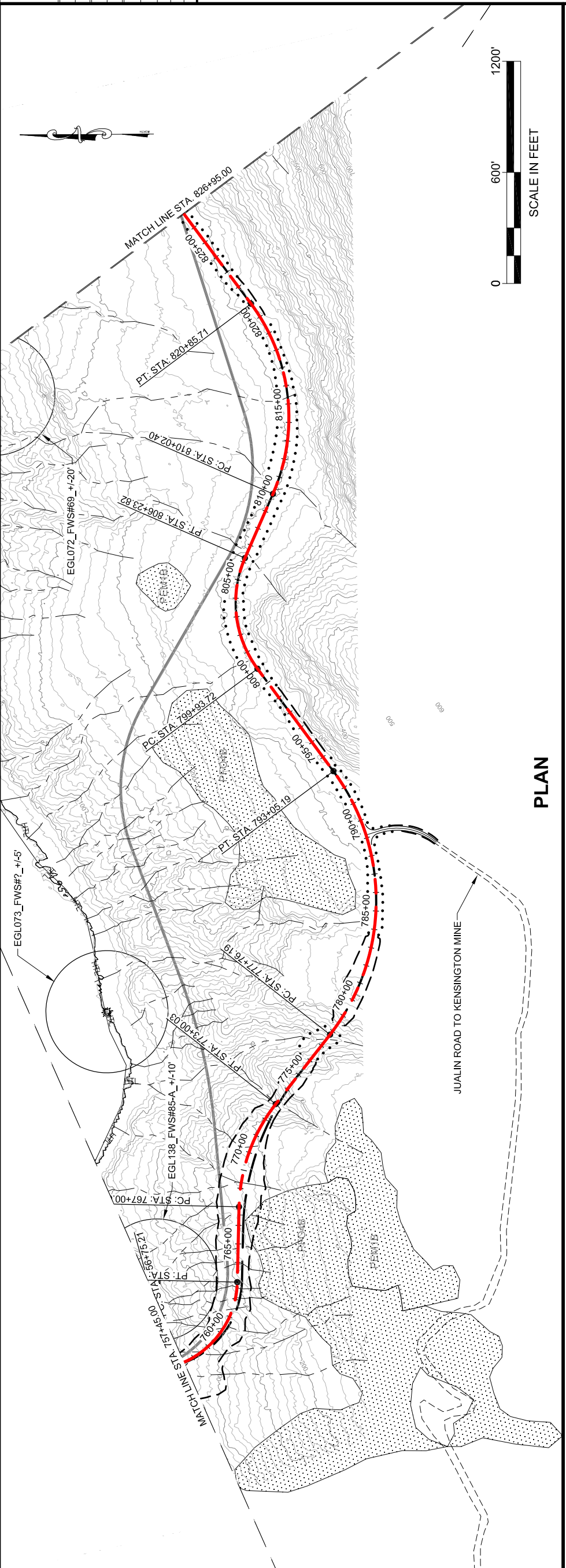
STATE OF ALASKA
DEPARTMENT OF TRANSPORTATION
& PUBLIC FACILITIES
SOUTHEAST REGION

JNU-EAST LYNN CANAL
HIGHWAY ALTERNATIVE 2B
PROJECT #71100

**2013 EIS
PLAN VIEW**

PROJECT DESIGNATION
71100

STATE	ALASKA
YEAR	2013
SHEET NUMBER	EL10
TOTAL SHEETS	38



DO NOT SCALE FROM THESE DRAWINGS USE DIMENSIONS

PROFILE

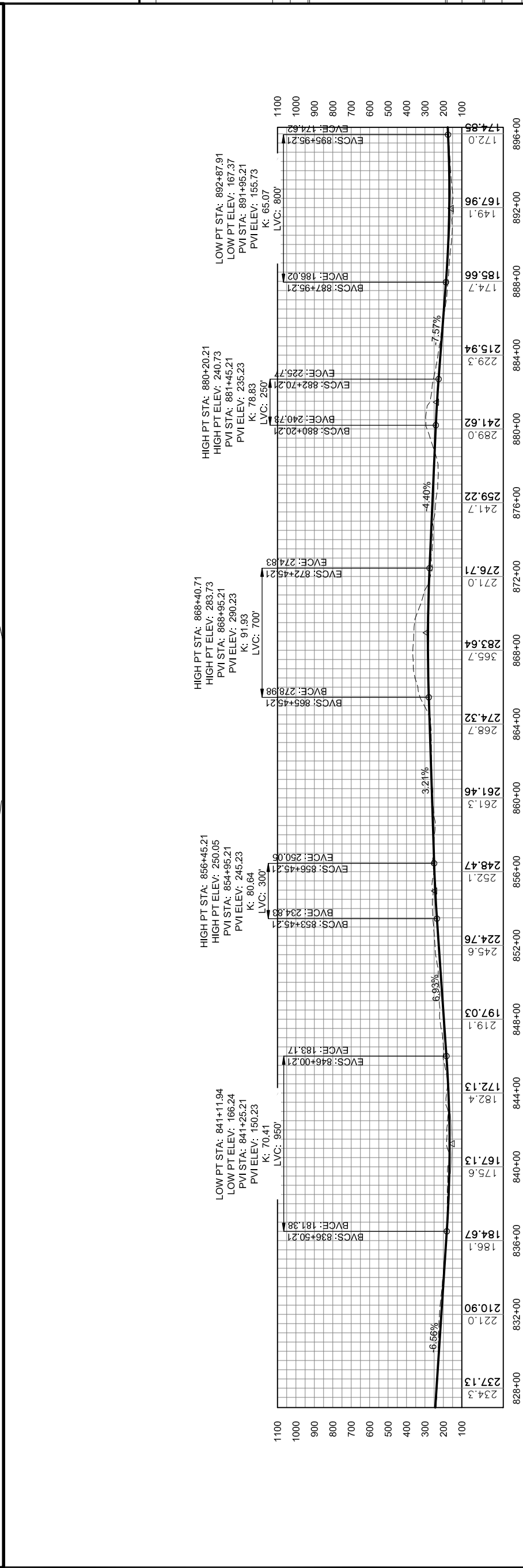
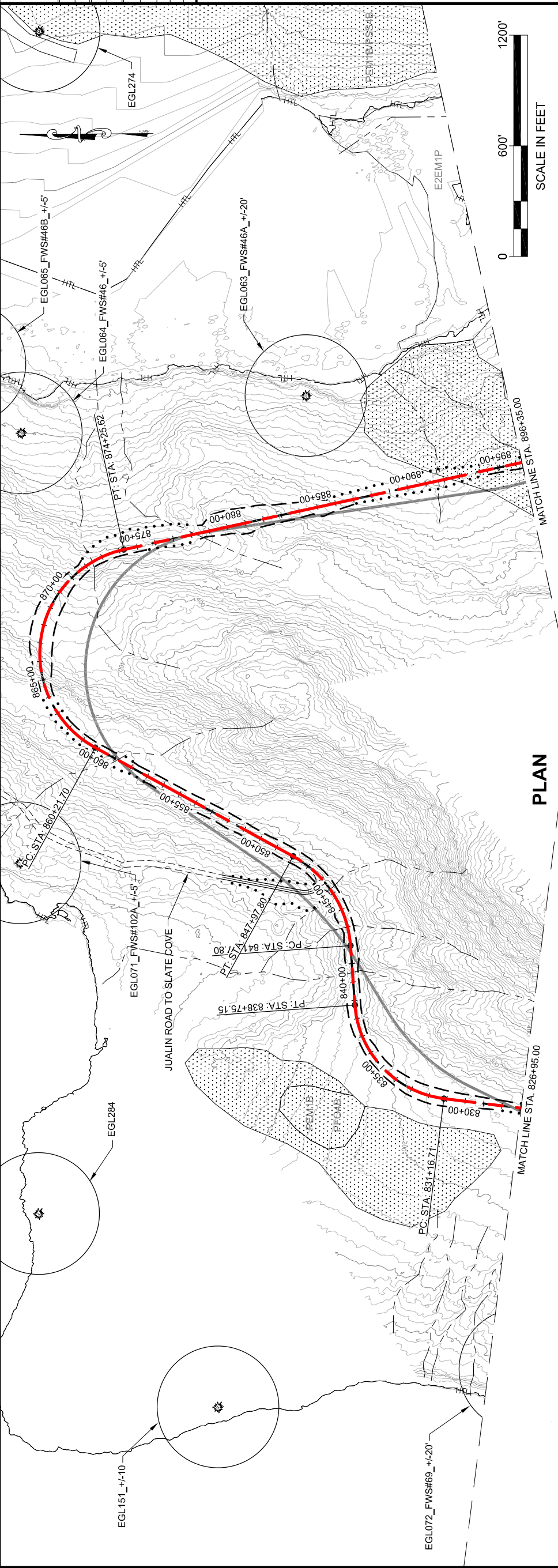
This page intentionally left blank.

PATH: C:\JULI10\DR10-2013 EIS DWGSET\100_2013 EIS
 GEARY, NATE (DOT)
 TAB: EL11.dwg, October 04, 2013 12:44:23 PM

APPENDUM NUMBER

ATTACHMENT NUMBER

RECORD OF REVISIONS	
DATE	DESCRIPTION



PLAN LEGEND

CHECKED BY:

DESIGNED BY:
 DRAWN BY:

STATE OF ALASKA
 DEPARTMENT OF TRANSPORTATION
 & PUBLIC FACILITIES
 SOUTHEAST REGION

JNU-EAST LYNN CANAL
 HIGHWAY ALTERNATIVE 2B
 PROJECT #71100

**2013 EIS
 PLAN VIEW**

PROJECT DESIGNATION
71100

STATE	YEAR
ALASKA	2013

SHEET NUMBER	TOTAL SHEETS
EL11	38

DO NOT SCALE FROM THESE DRAWINGS USE DIMENSIONS

PROFILE

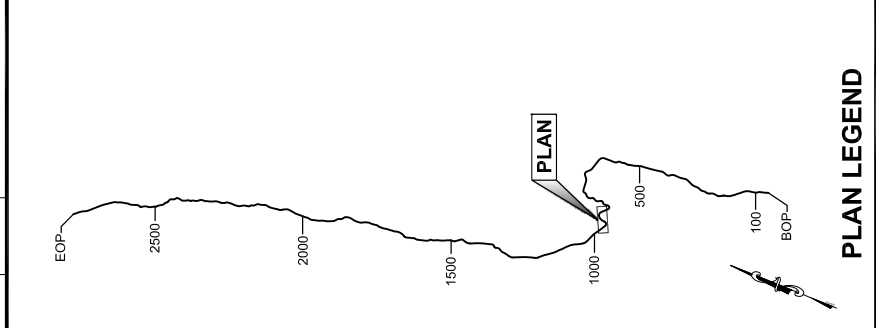
This page intentionally left blank.

PATH: C:\UNITS\10\08\10-2013 EIS DWGSET\100_2013 EIS
 GEARY, NATE (DOT)
 TAB: EL1.dwg, October 04, 2013 12:46:54 PM

APPENDUM NUMBER

ATTACHMENT NUMBER

RECORD OF REVISIONS		
NO.	DATE	DESCRIPTION



DRAFT

DESIGNED BY:
 DRAWN BY:

STATE OF ALASKA
 DEPARTMENT OF TRANSPORTATION
 & PUBLIC FACILITIES
 SOUTHEAST REGION

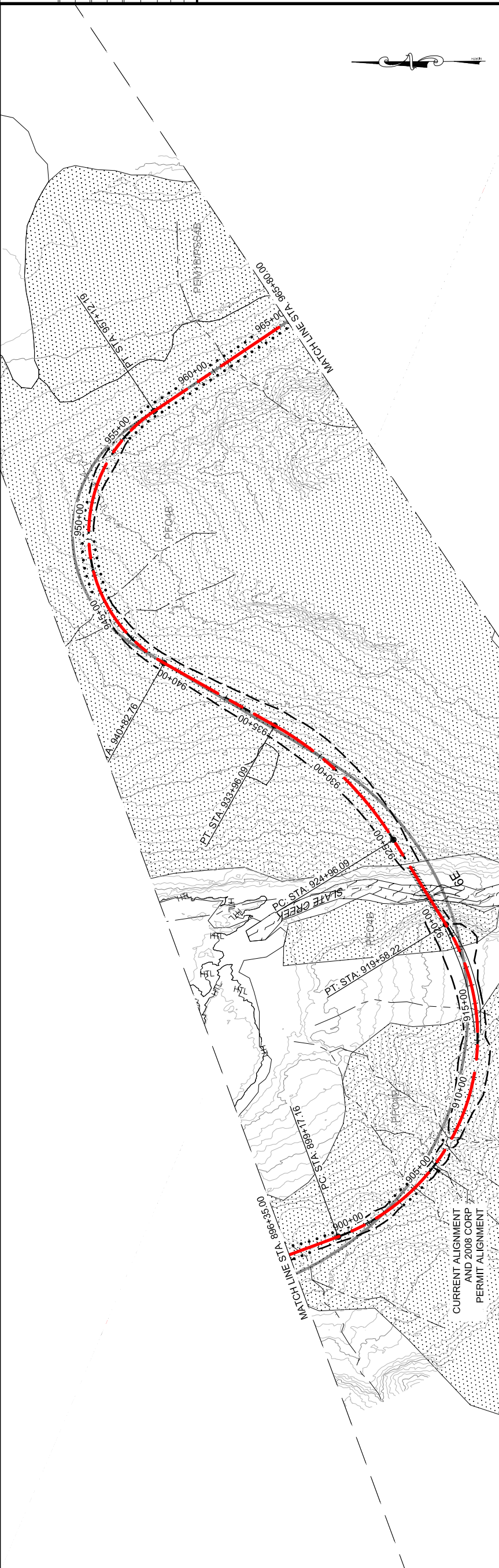
**JNU-EAST LYNN CANAL
 HIGHWAY ALTERNATIVE 2B
 PROJECT #71100**

**2013 EIS
 PLAN VIEW**

PROJECT DESIGNATION
71100

STATE	YEAR
ALASKA	2013

SHEET NUMBER **EL12** TOTAL SHEETS **38**



LEGEND

	CURRENT ALIGNMENT
	PROPOSED FILL SLOPE
	PROPOSED CUT SLOPE
	PROPOSED WALL
	2006 FEIS ALIGNMENT
	2008 CORP PERMIT ALIGNMENT

GEO HAZARD AREA LEGEND

DF: DEBRIS FLOW
 HR: HAZARD ROCK
 LS: LAND SLIDE
 RF: ROCK FALL
 RS: ROCK SLIDE
 SR: SOIL RAVELING

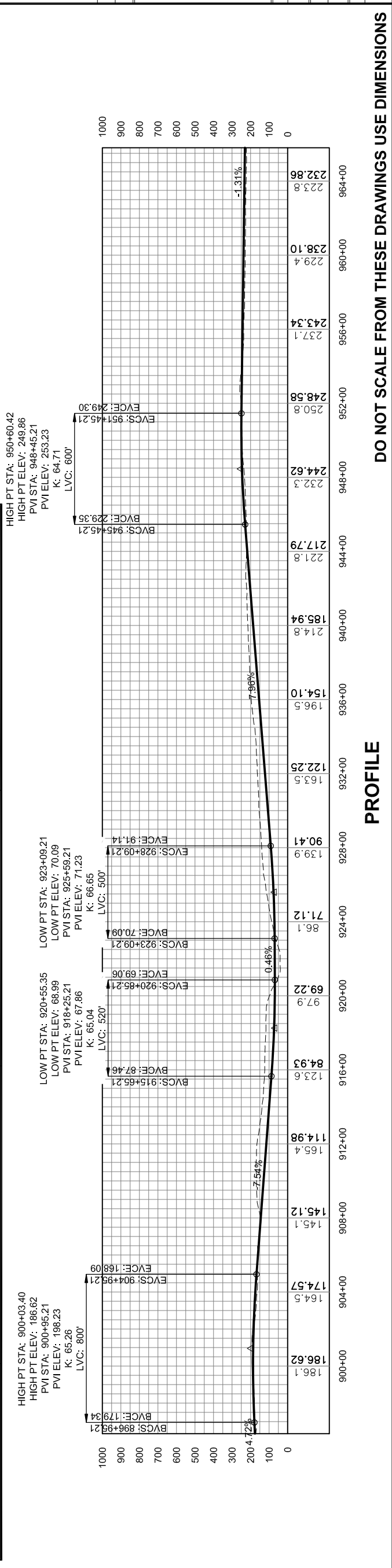
BRIDGES

WETLAND

AVALANCHE CHUTE

AVALANCHE STARTING ZONE

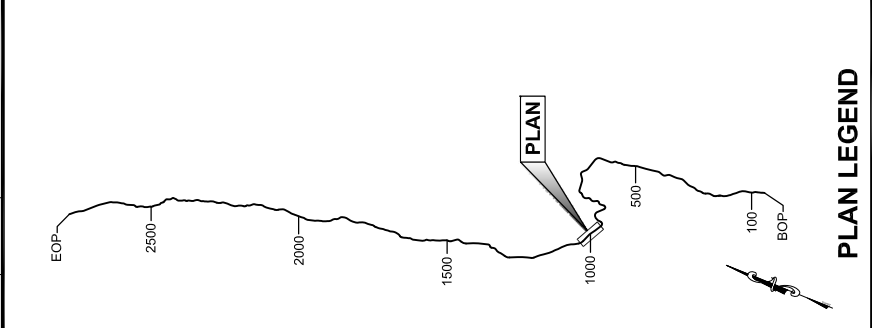
EAGLE TREE



This page intentionally left blank.

PATH: C:\JUN17\100DR\10-2013 EIS DWGSET\100_2013 EIS
 GEARY, NATE (DOT)
 TAB: EL1.dwg, October 04, 2013 12:45:30 PM

RECORD OF REVISIONS		
NO.	DATE	DESCRIPTION



PLAN LEGEND

CHECKED BY:

DRAFT

DESIGNED BY:
 DRAWN BY:

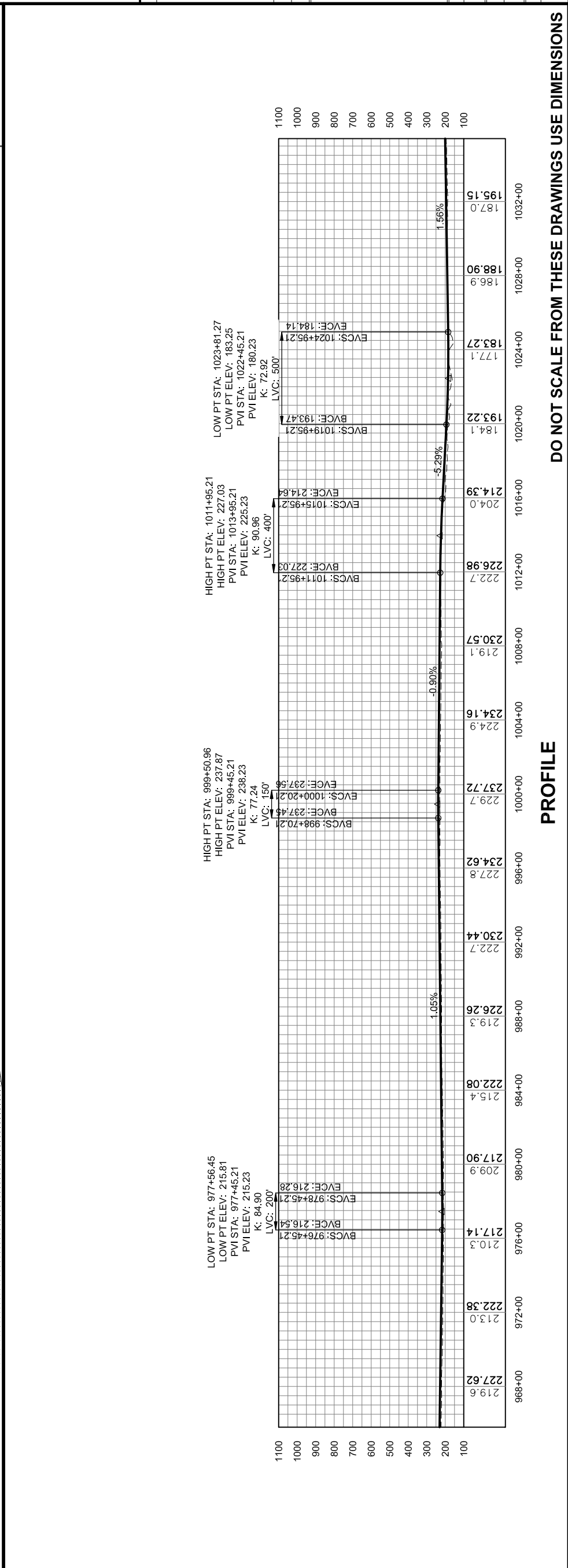
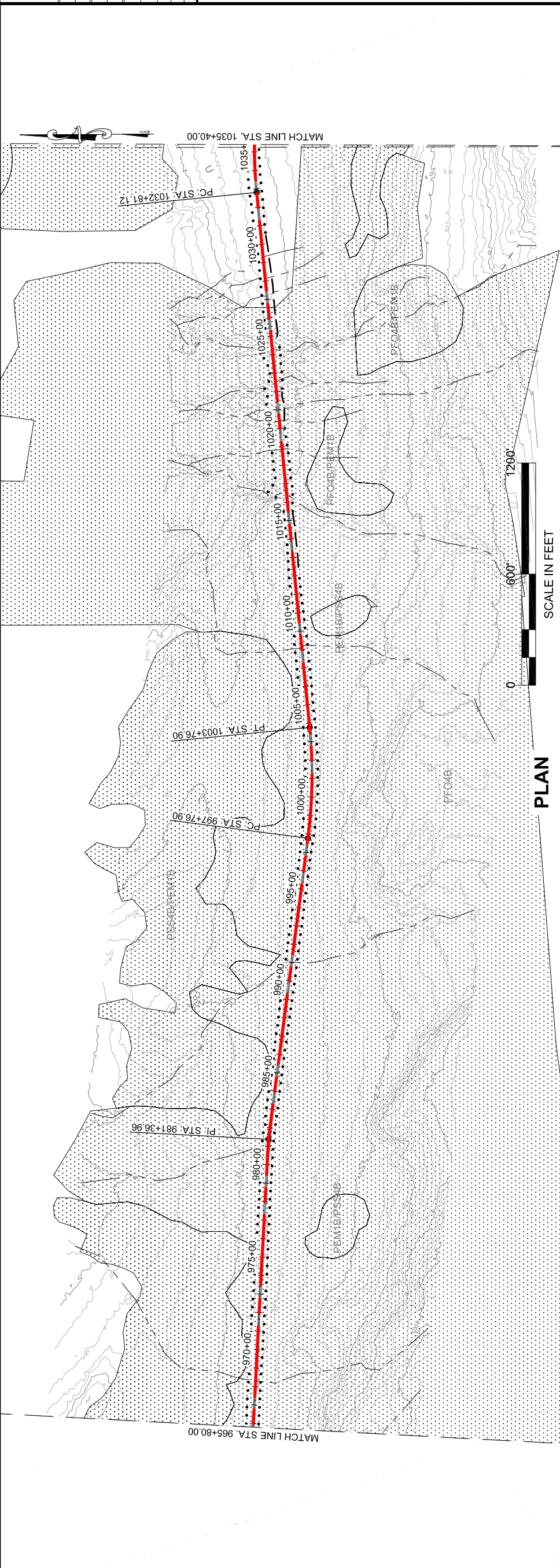
STATE OF ALASKA
 DEPARTMENT OF TRANSPORTATION
 & PUBLIC FACILITIES
 SOUTHEAST REGION

JNU-EAST LYNN CANAL
 HIGHWAY ALTERNATIVE 2B
 PROJECT #71100

**2013 EIS
 PLAN VIEW**

PROJECT DESIGNATION
71100

STATE	ALASKA	YEAR	2013
SHEET NUMBER	EL13	TOTAL SHEETS	38



DO NOT SCALE FROM THESE DRAWINGS USE DIMENSIONS

PROFILE

This page intentionally left blank.