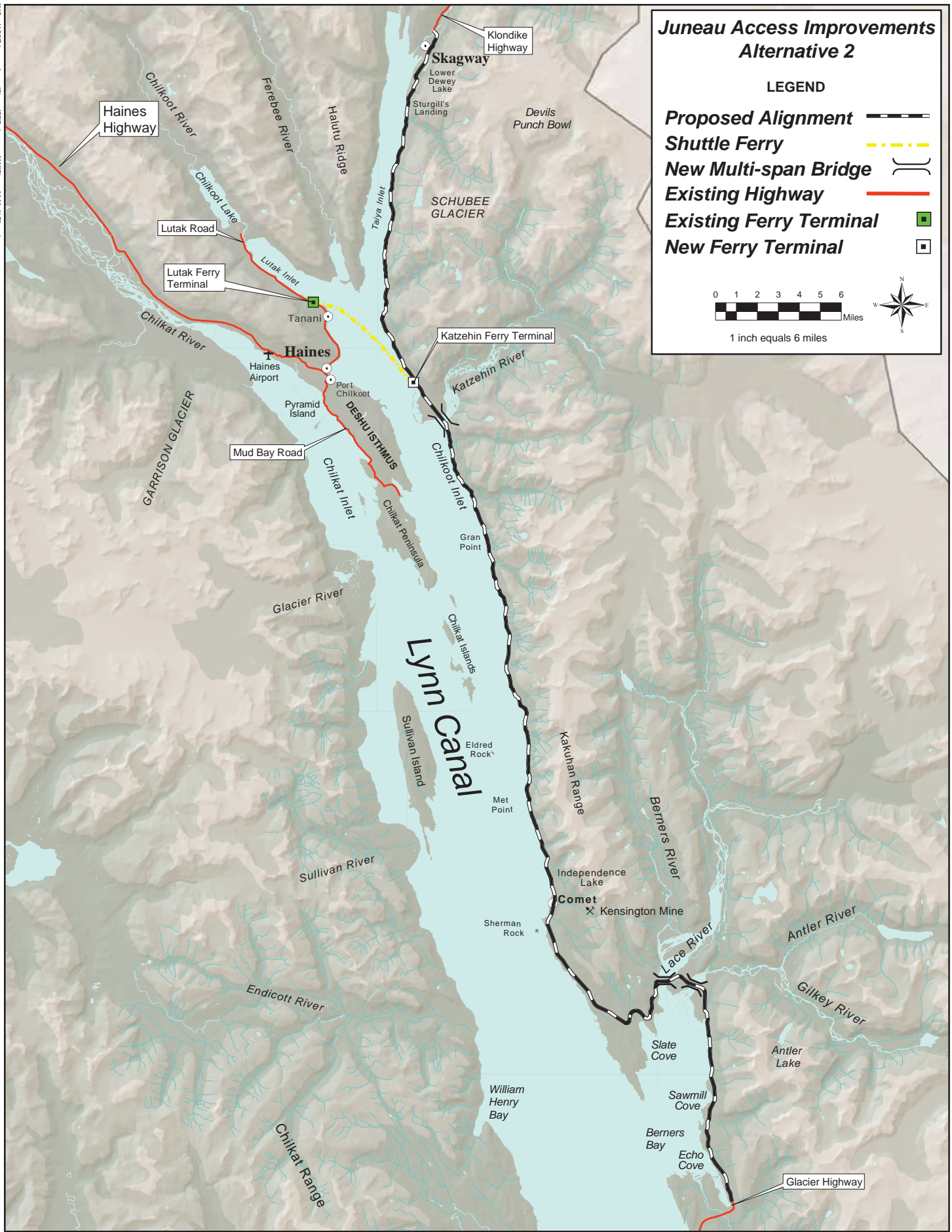


Figure 2-1
Taku River Valley Highway Alternative



**Figure 2-2
Alternative 2 : East Lynn Canal Highway with Katzeihin Ferry Terminal**

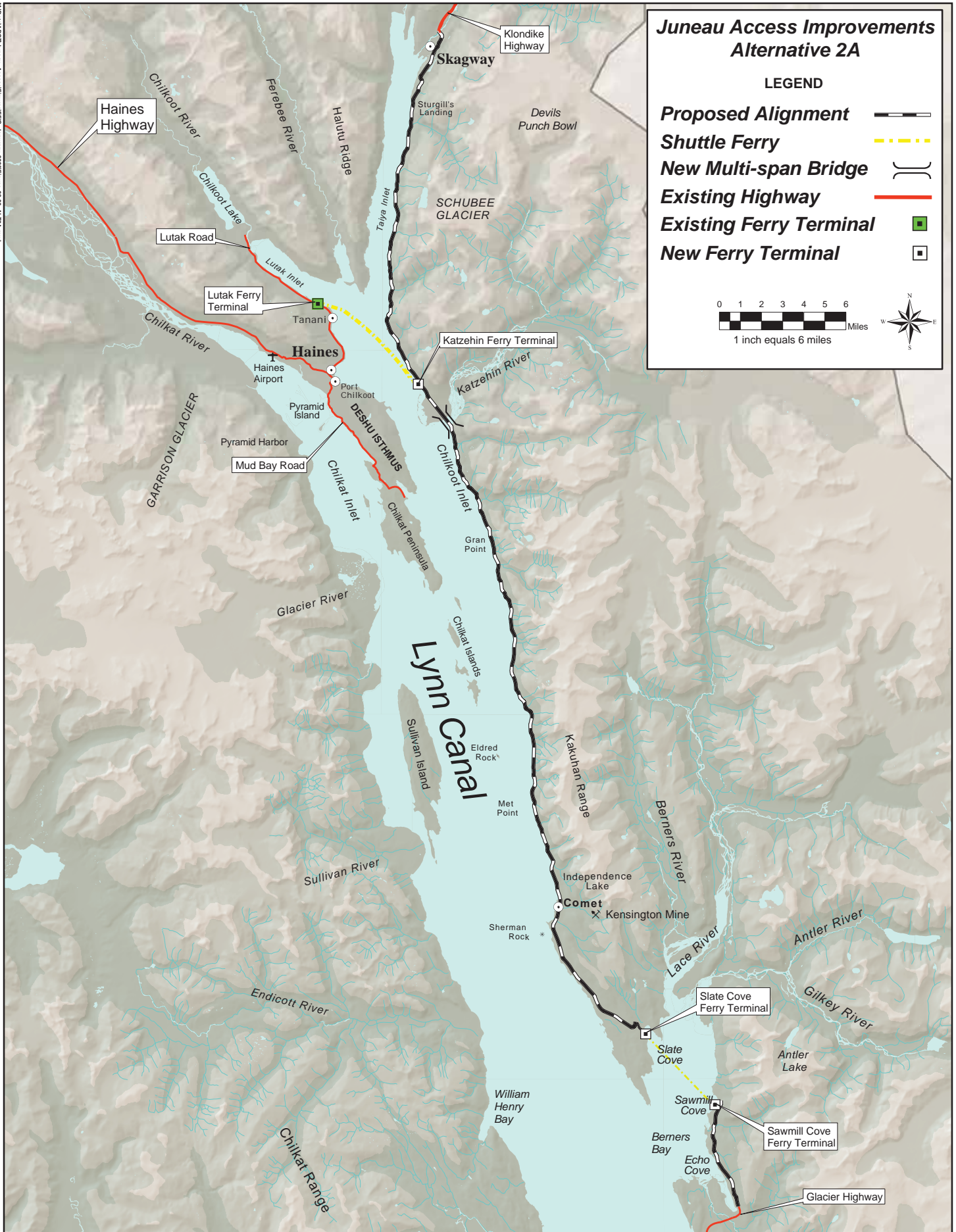


Figure 2-3
Alternative 2A: East Lynn Canal Highway with Berners Bay and Katzehin Ferry Shuttles

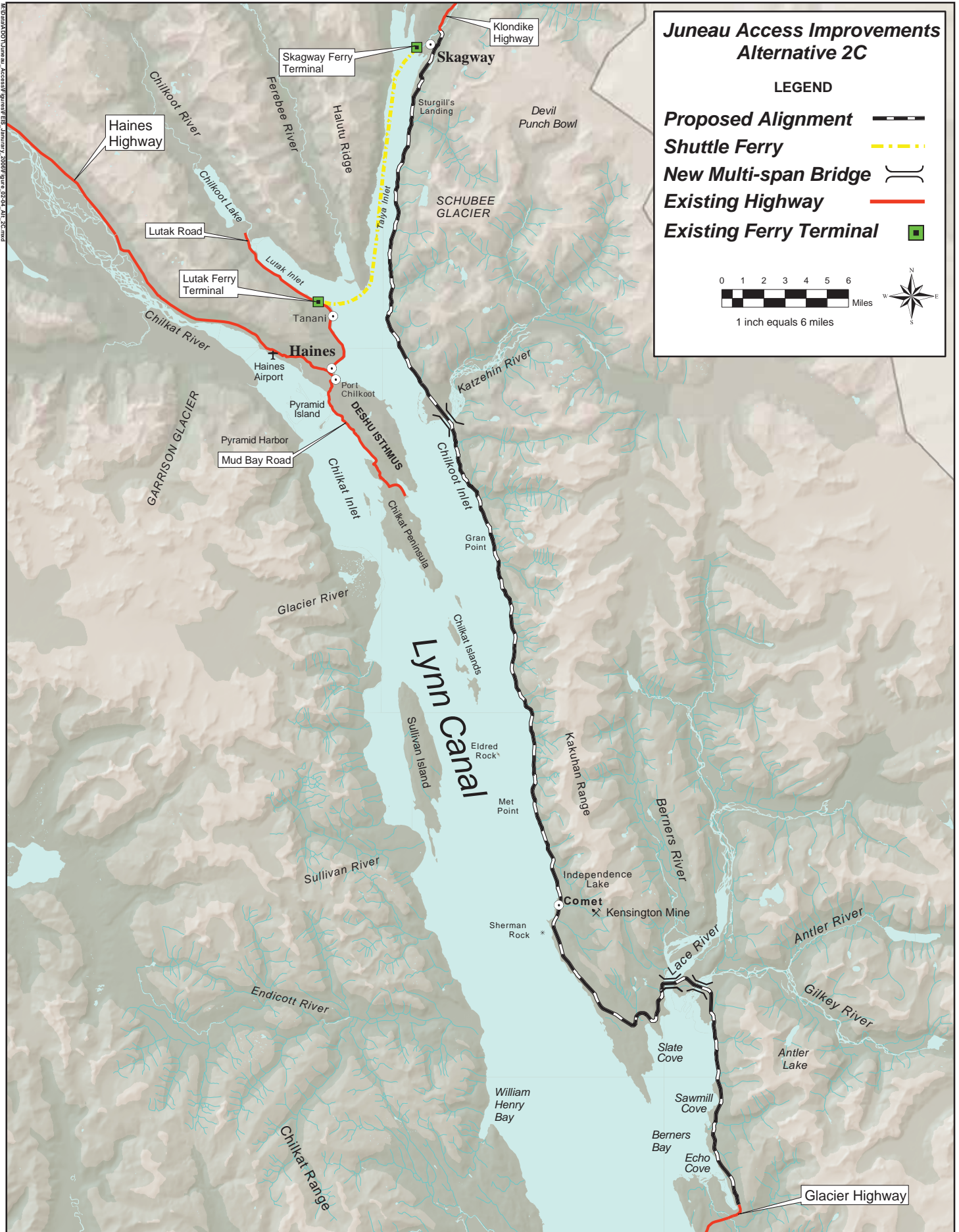
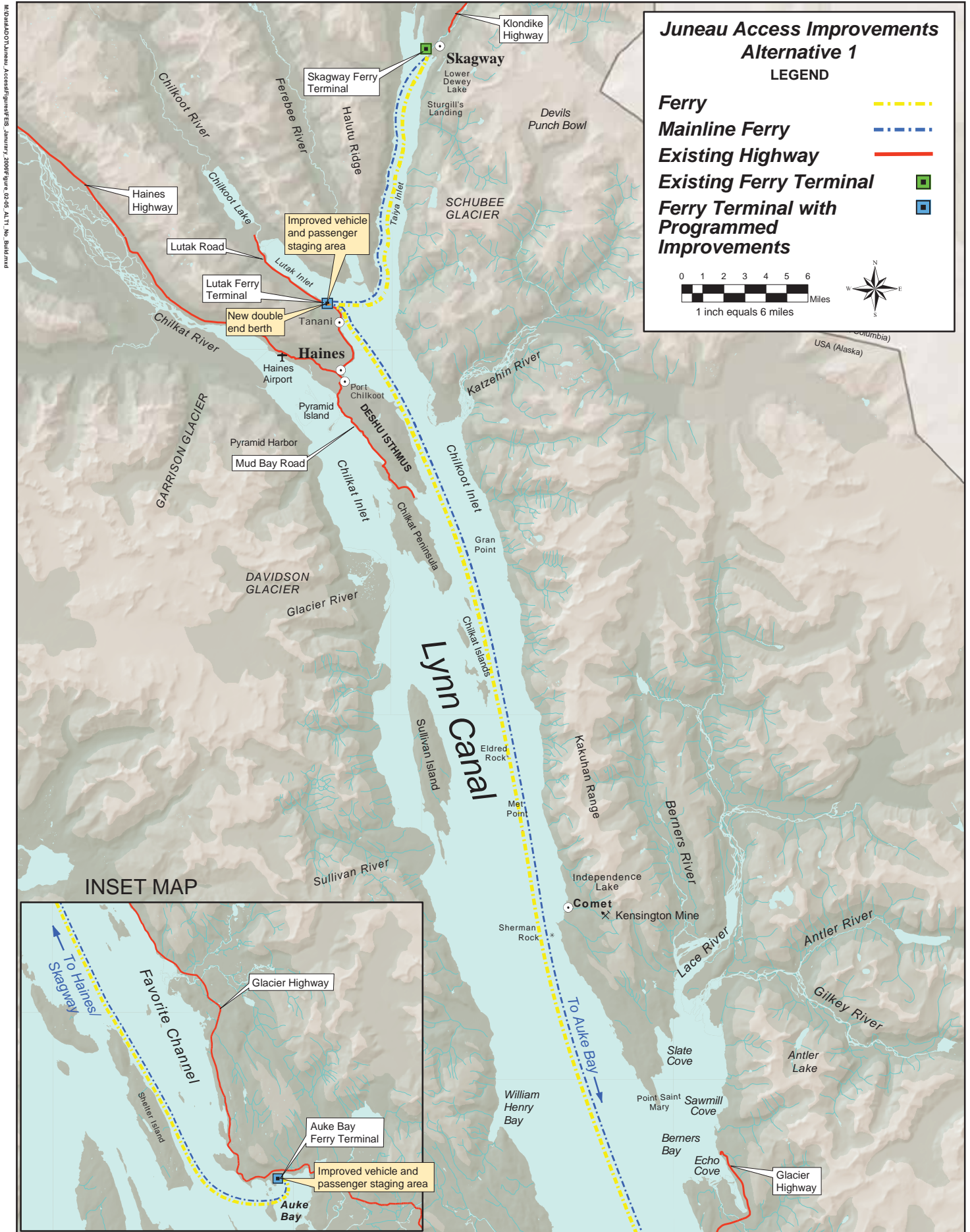


Figure 2-4
Alternative 2C: East Lynn Canal Highway with Haines/Skagway Shuttle



M:\04\01\01\Juneau_AccessImprovements_Figure_02-05_A1T1_No_Build.mxd

Figure 2-5
Alternative 1: No Action Alternative

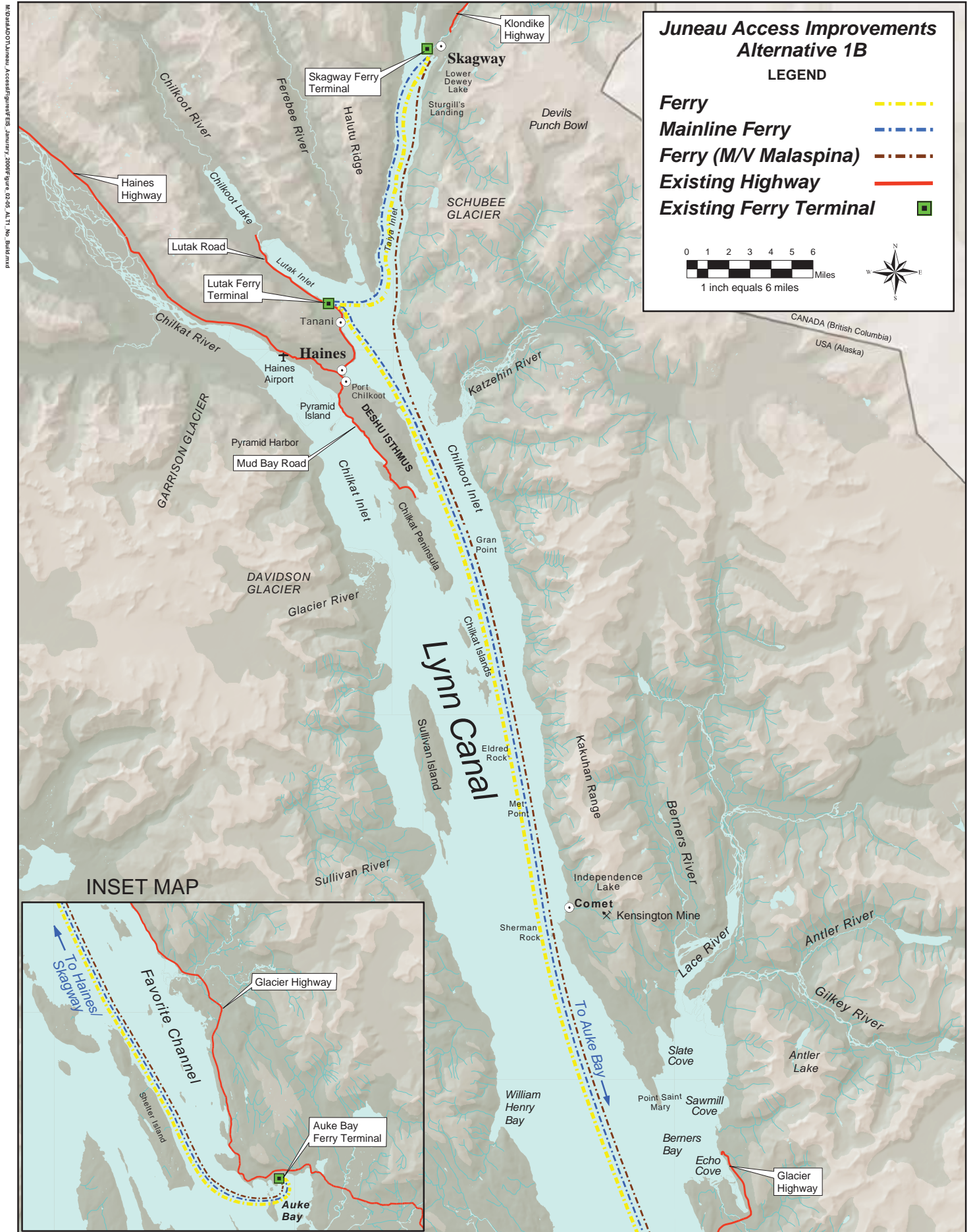


Figure 2-6
Alternative 1B: Enhanced Service with Existing AMHS Assets

M:\04\07\Juneau_AccessImprovements_January_2006\Figure_02-06_A111_No_Build.mxd

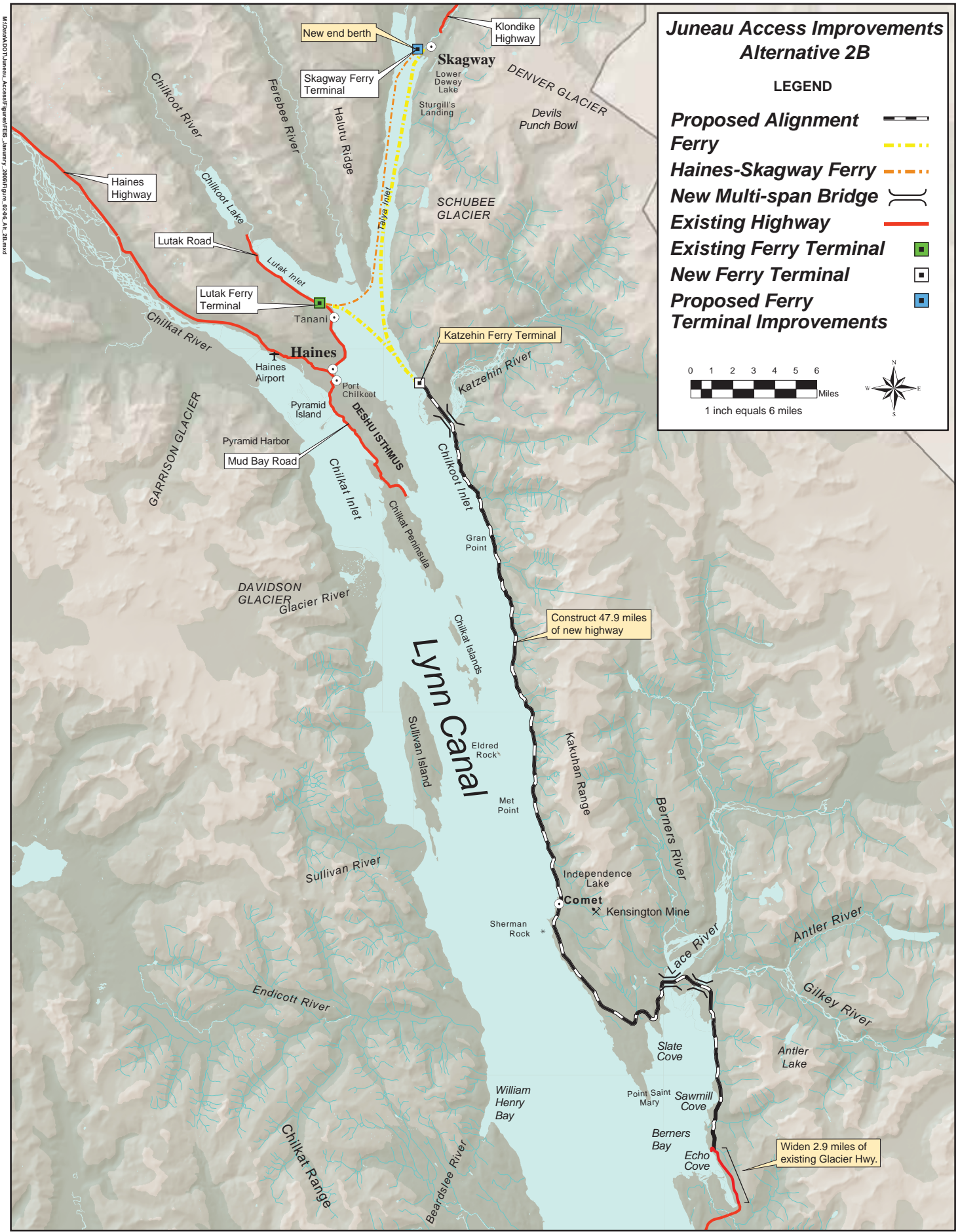
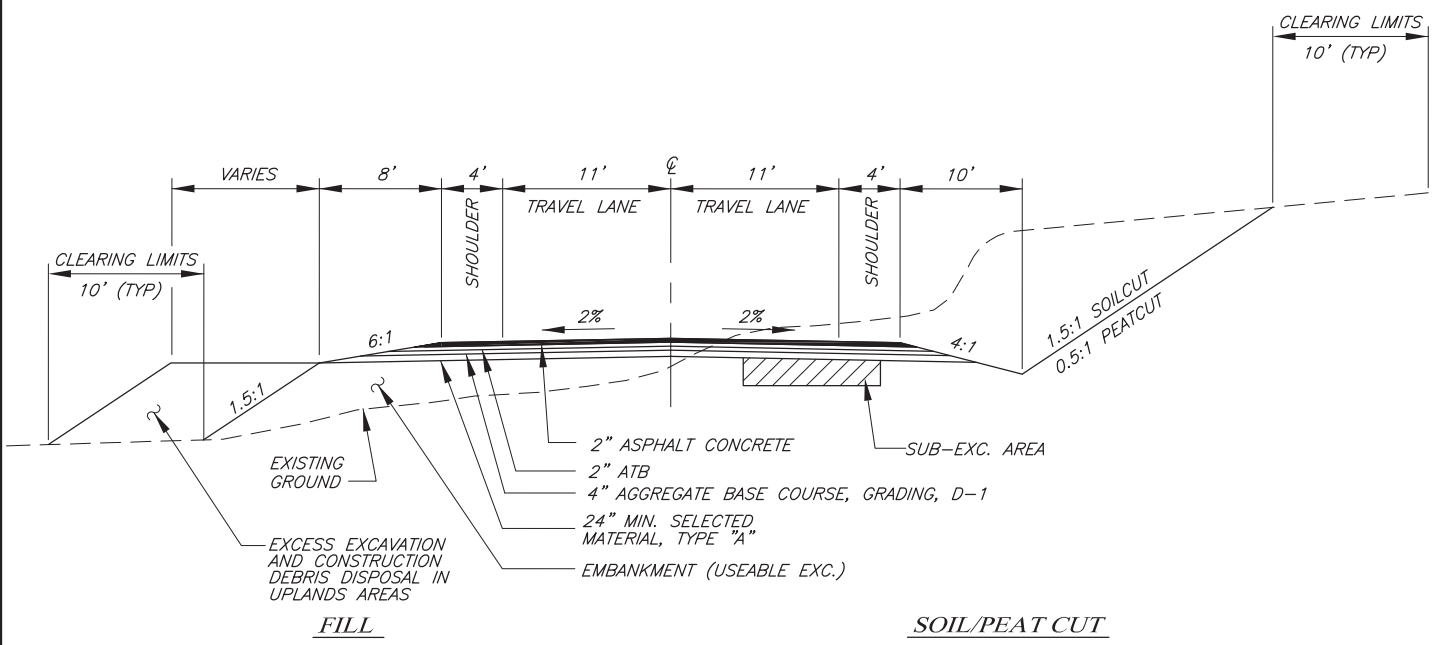


Figure 2-7a
Alternative 2B: East Lynn Canal Highway to Katzeihin Ferry Terminal with Shuttles to Haines & Skagway

**Juneau Access Improvements
Typical Roadway Section**

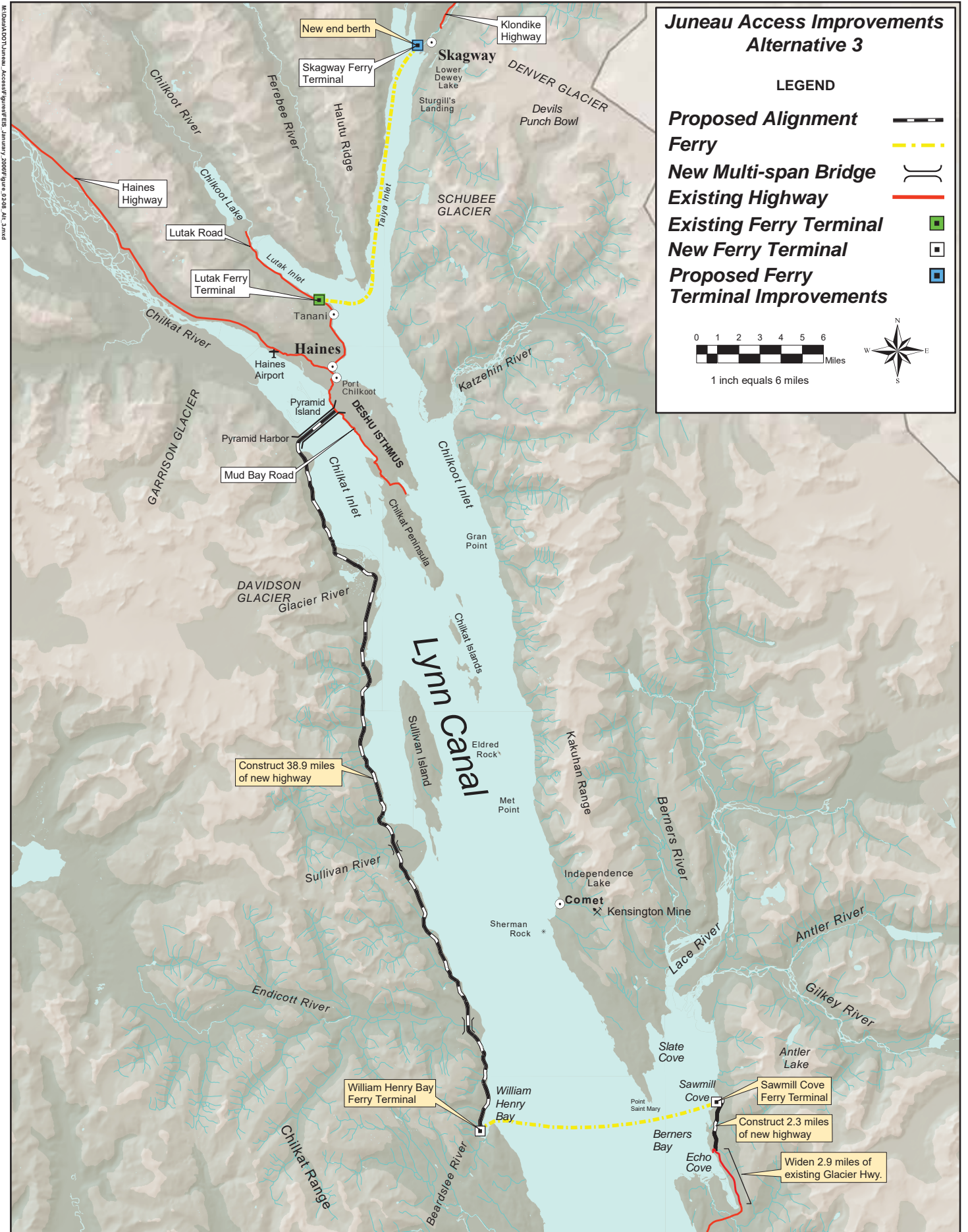
*Cut and Fill Typical
Both Sides of Roadway*



TYPICAL ROADWAY SECTION

CUT AND FILL TYPICAL BOTH SIDES OF ROADWAY

**Figure 2-7b
Typical Roadway Section**



M:\Data\00\Juneau_AccessImprovements_January_2006\Figure_0308_Alt_3.mxd

Juneau Access Improvements Alternative 3

LEGEND

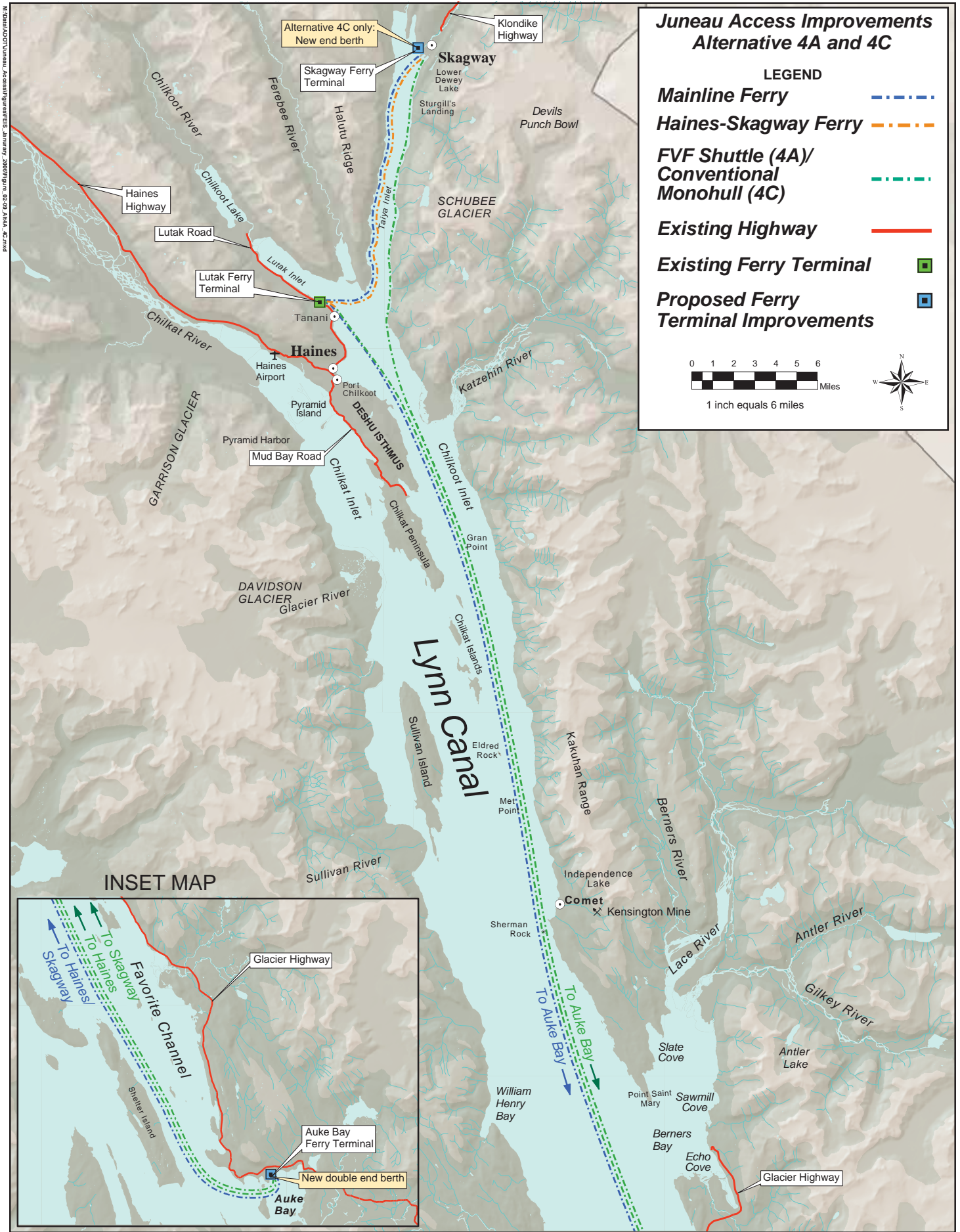
- Proposed Alignment**
- Ferry**
- New Multi-span Bridge**
- Existing Highway**
- Existing Ferry Terminal**
- New Ferry Terminal**
- Proposed Ferry Terminal Improvements**



1 inch equals 6 miles



**Figure 2-8
Alternative 3: West Lynn Canal Highway**



**Figure 2-9
Alternative 4A: Fast Vehicle Ferry (FVF) and Alternative 4C: Conventional Monohull Shuttle
Service from Auke Bay**

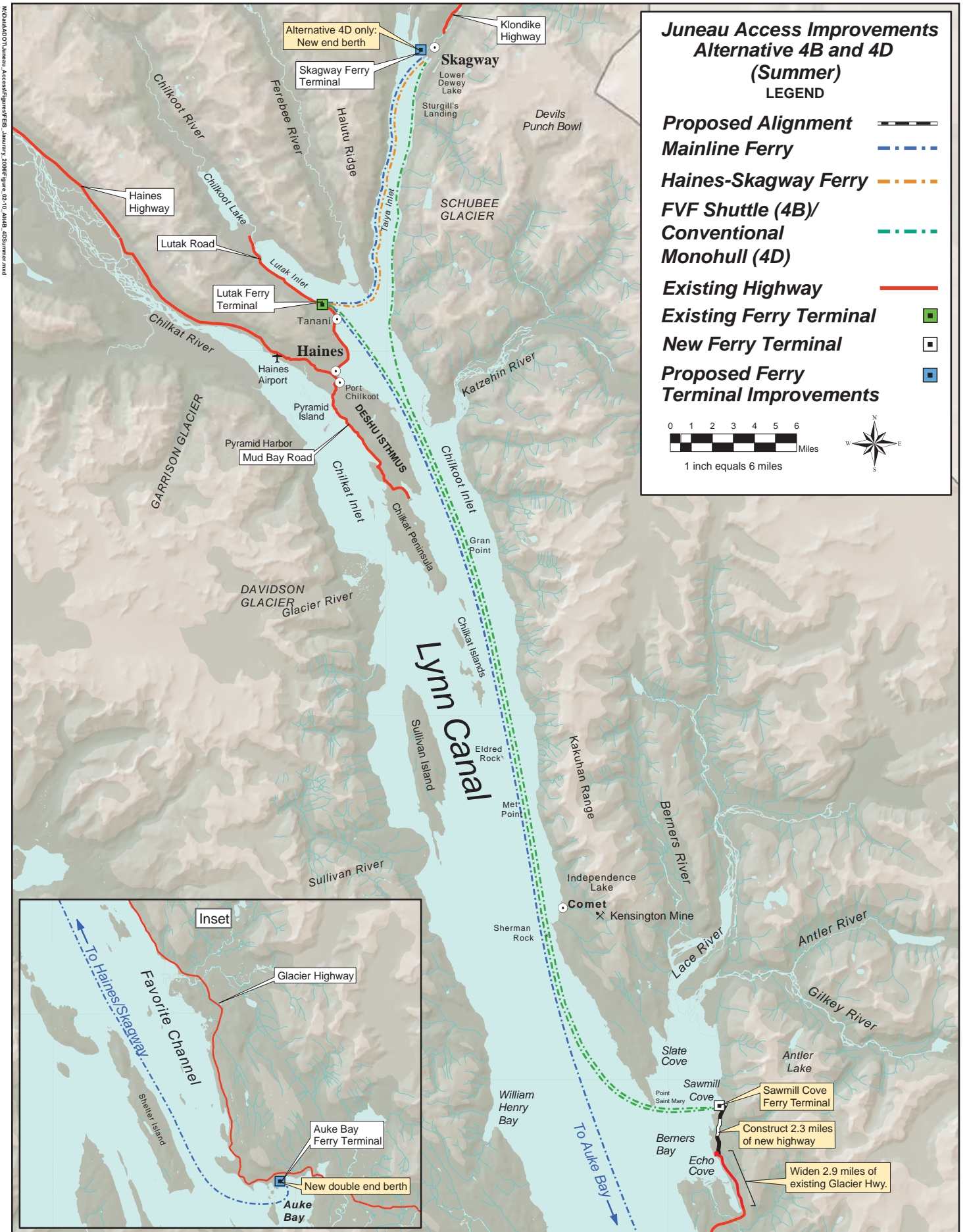


Figure 2-10
Alternative 4B: Fast Vehicle Ferry (FVF) and Alternative 4D: Conventional Monohull Shuttle Service
from Berners Bay (Summer)

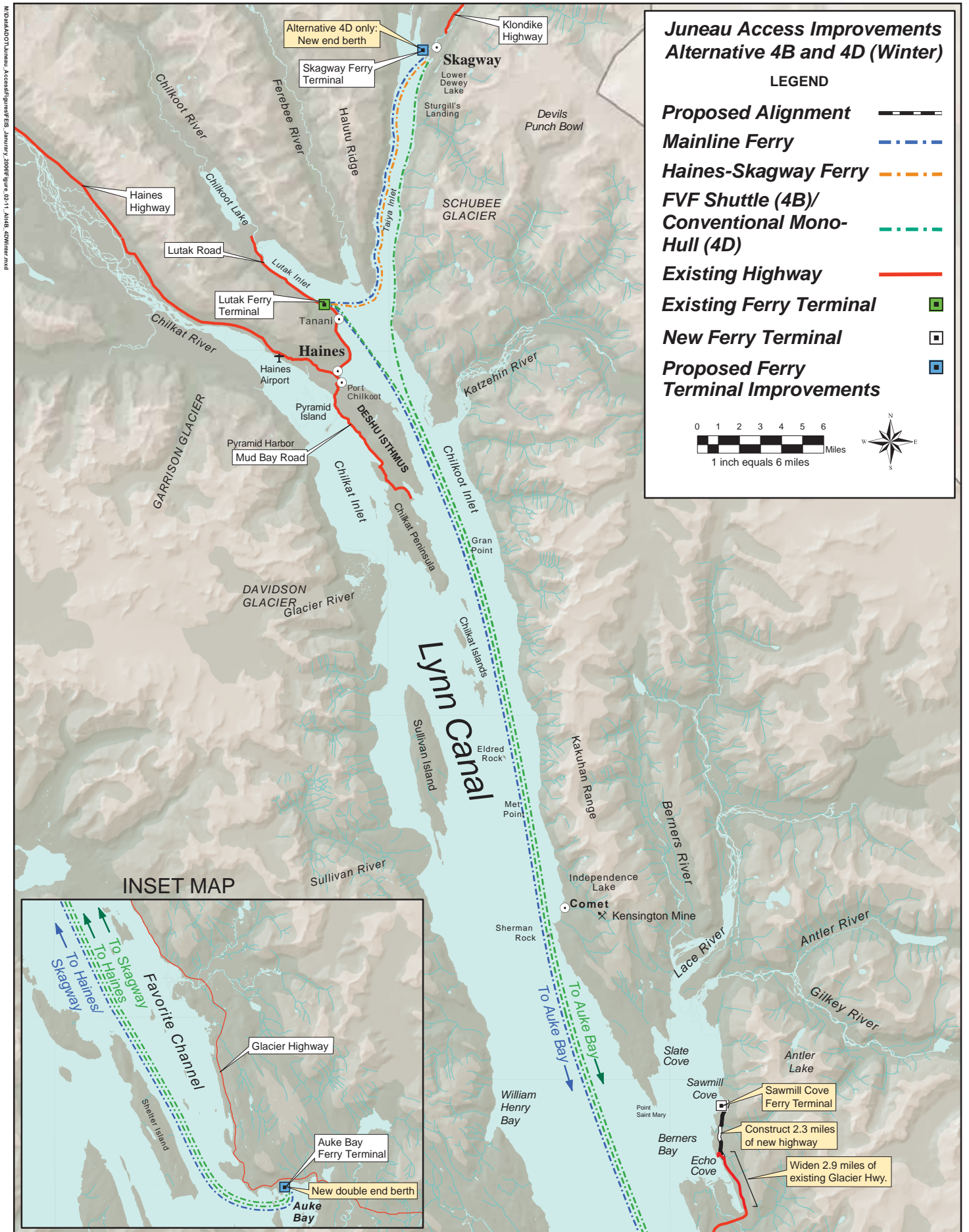


Figure 2-11
Alternative 4B: Fast Vehicle Ferry (FVF) and Alternative 4D: Conventional Monohull Shuttle Service from Auke Bay (Winter)