

Legend

IFSAR Terrain Data (meters)

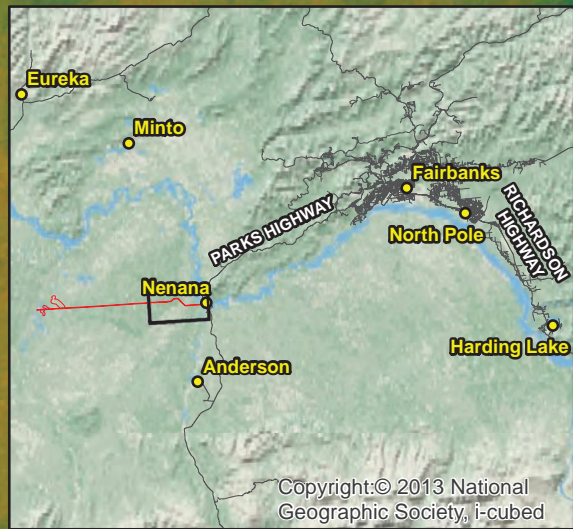
91 - 93	114 - 117	138 - 141	162 - 165	186 - 189
93 - 96	117 - 120	141 - 144	165 - 168	189 - 192
96 - 99	120 - 123	144 - 147	168 - 171	192 - 195
99 - 102	123 - 126	147 - 150	171 - 174	195 - 198
102 - 105	126 - 129	150 - 153	174 - 177	198 - 201
105 - 108	129 - 132	153 - 156	177 - 180	201 - 204
108 - 111	132 - 135	156 - 159	180 - 183	
111 - 114	135 - 138	159 - 162	183 - 186	

**** MATERIAL EXTRACTION ZONES:** These zones represent general areas in which materials may be extracted. Extraction will occur in smaller 1 to 10 acre cells. The total disturbed area within all extraction zones will not exceed 70 acres, including 50 acres within the road R/W, and 20 acres within/adjacent to the Kantishna River floodplain.

- Bridges
- Alternatives 1&2
- Material Extraction Zone
- Preliminary APE
- RS2477 Trails
- Proposed Culverts
- Material Sites



Document Path: H:\Projects\Communities\Nenana\Totchaket\NENANA_r3.mxd



City owned, existing Material Source

existing road, proposed haul route

existing trail, proposed haul route

EXISTING DREDGE SITE AND HAUL ROUTE



Legend

IFSAR Terrain Data (meters)

108 - 111	132 - 135	156 - 159	180 - 183
111 - 114	135 - 138	159 - 162	183 - 186
114 - 117	138 - 141	162 - 165	186 - 189
117 - 120	141 - 144	165 - 168	189 - 192
120 - 123	144 - 147	168 - 171	192 - 195
123 - 126	147 - 150	171 - 174	195 - 198
126 - 129	150 - 153	174 - 177	198 - 201
129 - 132	153 - 156	177 - 180	201 - 204

- Bridges
- Alternatives 1&2
- Material Extraction Zone
- Preliminary APE
- RS2477 Trails
- Proposed Culverts
- Existing Material Sites



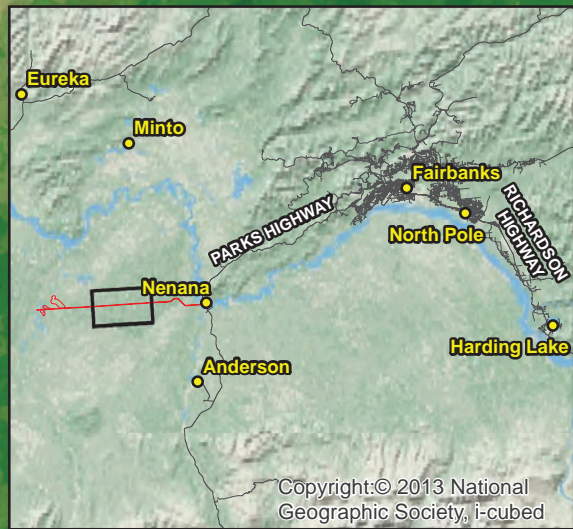
STATE OF ALASKA
Department of Transportation and Public Facilities
2301 Peger Road Fairbanks, AK 99709

Date: December 2021

Figure 2

Nenana Totchaket Road

Document Path: H:\Projects\Communities\Nenana\Totchaket\NENANA_r3.mxd



End Existing Road Rehabilitation
Begin New Road Construction

**Material Extraction Zones

**Material Extraction Zones



Legend

IFSAR Terrain Data (meters)

91 - 93	108 - 111	132 - 135	156 - 159	180 - 183
93 - 96	111 - 114	135 - 138	159 - 162	183 - 186
96 - 99	114 - 117	138 - 141	162 - 165	186 - 189
99 - 102	117 - 120	141 - 144	165 - 168	189 - 192
102 - 105	120 - 123	144 - 147	168 - 171	192 - 195
105 - 108	123 - 126	147 - 150	171 - 174	195 - 198
	126 - 129	150 - 153	174 - 177	198 - 201
	129 - 132	153 - 156	177 - 180	201 - 204

**** MATERIAL EXTRACTION ZONES:** These zones represent general areas in which materials may be extracted. Extraction will occur in smaller 1 to 10 acre cells. The total disturbed area within all extraction zones will not exceed 70 acres, including 50 acres within the road R/W, and 20 acres within/adjacent to the Kantishna River floodplain.

- Bridges
- Road_Extensions
- Material Extraction Zone
- Preliminary APE
- RS2477 Trails
- Proposed Culverts
- Existing Material Sites



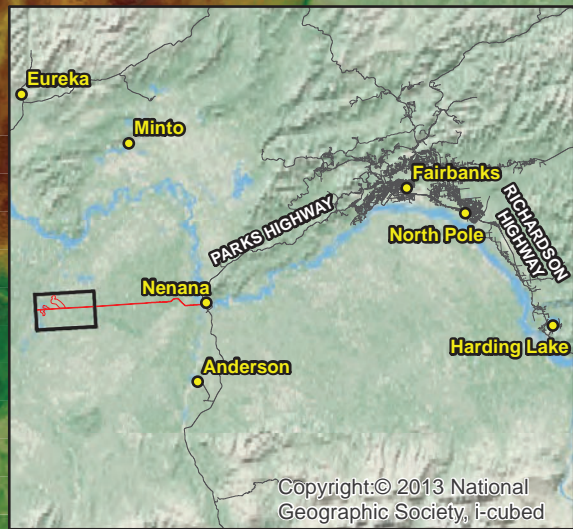
STATE OF ALASKA
Department of Transportation and Public Facilities
2301 Peger Road Fairbanks, AK 99709

Date: December 2021

Figure 3

Nenana Totchaket Road

Document Path: H:\Projects\Communities\Nenana\Totchaket\NENANA_r3.mxd



Potential Future Road EOP

**Material Extraction Zone

Alternative 2

**Material Extraction Zone

**Material Extraction Zone

Alternative 1

End New Road Construction
End of Existing ROW

Potential Future Road EOP

**Material Extraction Zone

Document Path: H:\Projects\Communities\Totchaket\NENANA_r3.mxd

Legend

IFSAR Terrain Data (meters)

91 - 93	108 - 111	132 - 135	156 - 159	180 - 183
93 - 96	111 - 114	135 - 138	159 - 162	183 - 186
96 - 99	114 - 117	138 - 141	162 - 165	186 - 189
99 - 102	117 - 120	141 - 144	165 - 168	189 - 192
102 - 105	120 - 123	144 - 147	168 - 171	192 - 195
105 - 108	123 - 126	147 - 150	171 - 174	195 - 198
	126 - 129	150 - 153	174 - 177	198 - 201
	129 - 132	153 - 156	177 - 180	201 - 204

**** MATERIAL EXTRACTION ZONES:** These zones represent general areas in which materials may be extracted. Extraction will occur in smaller 1 to 10 acre cells. The total disturbed area within all extraction zones will not exceed 70 acres, including 50 acres within the road R/W, and 20 acres within/adjacent to the Kantishna River floodplain.

- Bridges
- Alternatives 1&2
- Material Extraction Zone
- Preliminary APE
- RS2477 Trails
- Proposed Culverts
- Existing Material Sites



STATE OF ALASKA
Department of Transportation and Public Facilities
2301 Peger Road Fairbanks, AK 99709

Date: December 2021

Figure 4

Nenana Totchaket Road