

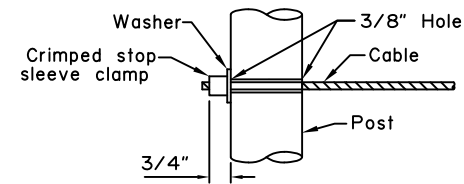
ELEVATION

CONSTRUCTION NOTES:

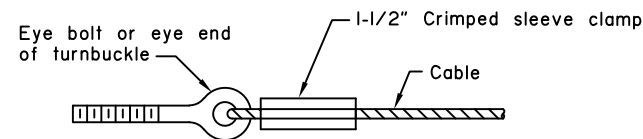
1. Place intermediate turnbuckles in adjacent spans. Maximum span between turnbuckles is 200'-0".
2. Galvanize all posts, cable and hardware.
3. Install posts plumb.
4. Alignment of holes in posts may vary to conform to slope of top of wall.
5. Line posts shall be braced horizontally and trussed diagonally in both directions at intervals not to exceed 1000'-0" and at each end.
6. Typical end spans, braced in both directions, shall be constructed at changes in line where the angle of deflection is 15° or more.
7. Provide thimbles at all cable loops.

DESIGN NOTES:

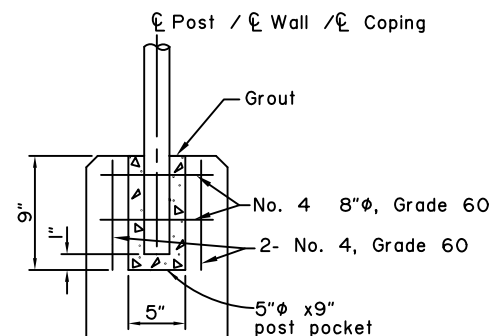
1. This rail is not intended for use where pedestrians or bicyclists are normally present.
2. This rail is intended for use where M&O personnel, inspectors, or engineers may be working at the top of a wall.



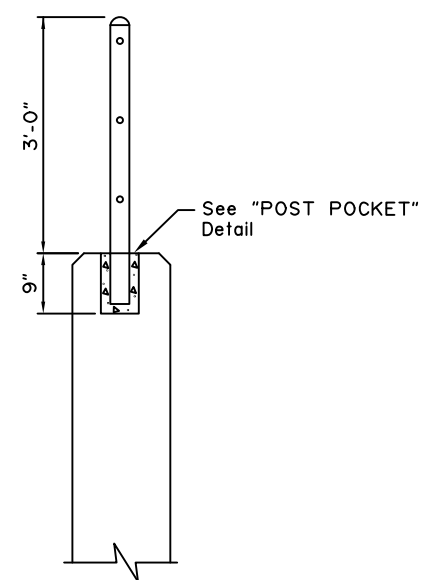
ALTERNATIVE DEAD END ANCHORAGE



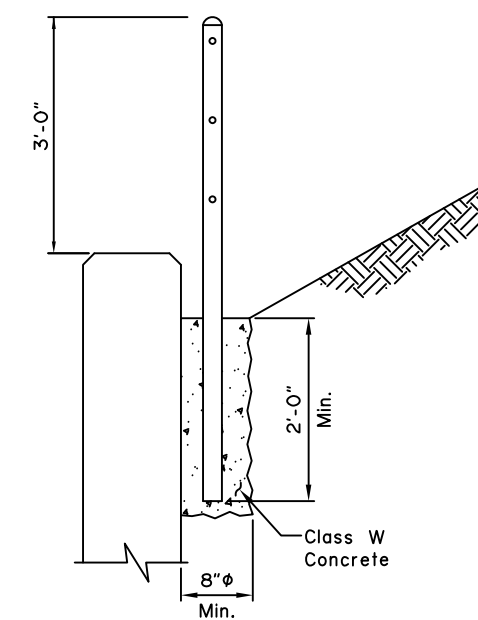
ALTERNATIVE CABLE CONNECTION



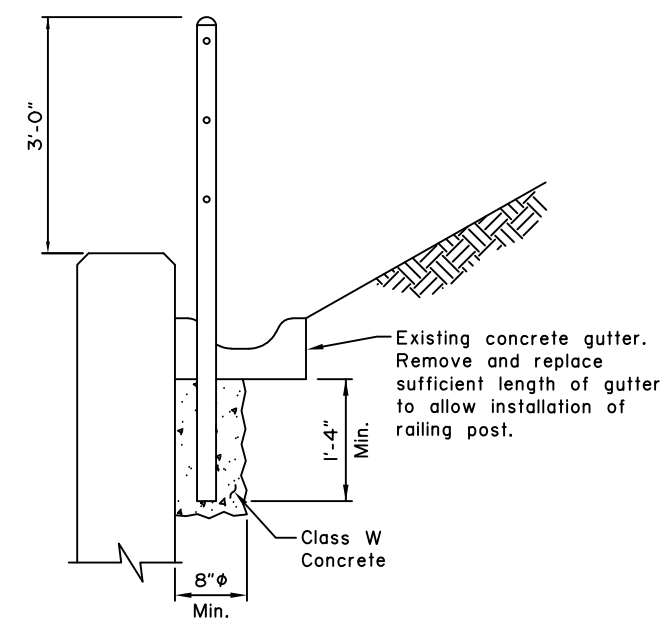
POST POCKET



SECTION A-A
CAST IN WALL OR COPING



SECTION A-A
BEHIND WALL WITHOUT GUTTER



SECTION A-A
BEHIND WALL WITH GUTTER

No Scale

State of Alaska DOT&PF
ALASKA STANDARD PLAN

CABLE SAFETY RAIL

Adopted as an Alaska
Standard Plan by: *Kenneth J. Fisher*
Kenneth J. Fisher, P.E.
Chief Engineer

Adoption Date: 02/08/2019

Last Code and Stds. Review
By: Date:

Next Code and Standards Review date: 02/08/2029